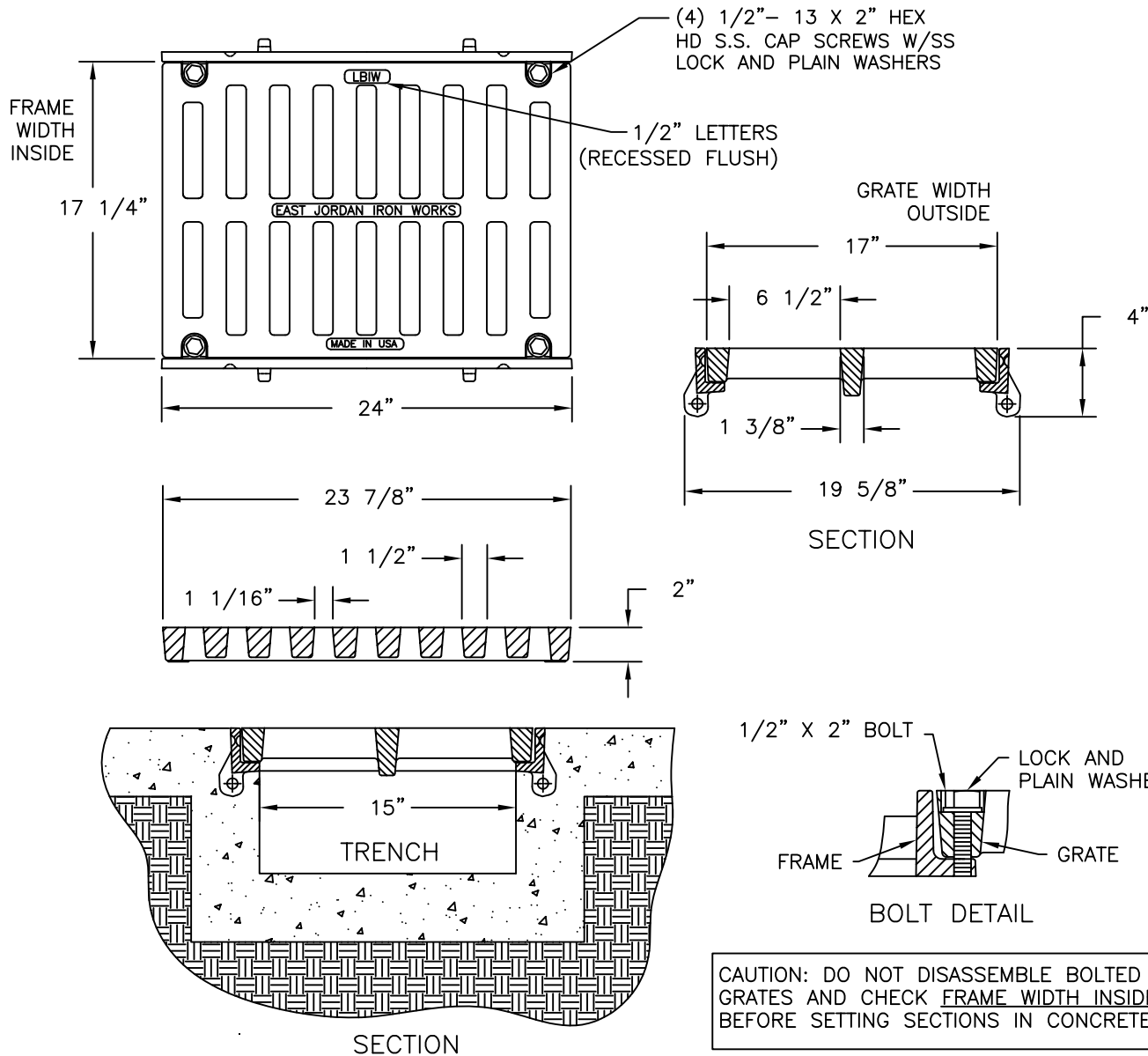


6900Z1/6905M2 DI ASSEMBLY



PRODUCT NUMBER

00690506

DESIGN FEATURES

MATERIALS

GRATE-DUCTILE IRON
ASTM A536

FRAME-GRAY IRON
ASTM A48 CL35B

DESIGN LOAD

EXTRA HEAVY DUTY

COATING

UNDIPPED

OPEN AREA

132 SQ IN

√ DESIGNATES MACHINED SURFACE

REFERENCE INFORMATION

00690023

00690547

DRAWING DETAILS

ORIGINAL DRAWING: DEW 03/29/05

REVISED BY: SMM 02/02/11

Corporate
Headquarters
301 Spring Street
PO Box 439
East Jordan, MI
49727-0439
800.874.4100



Call Today for
More Information

800.626.4653

EJIW EAST JORDAN
IRON WORKS EST. 1883

WE COVER YOUR INFRASTRUCTURE

www.ejiw.com

MADE IN THE USA

- Weights (lbs./kg.), dimensions (inches/mm.), and drawings provided for your guidance.
- We reserve the right to modify specifications without prior notice.
- Uncontrolled distribution.

CONFIDENTIAL: This drawing is the property of East Jordan Iron works, Inc., and embodies confidential information, registered marks, trade secret information, and/or know how that is the property of East Jordan Iron Works, Inc. ©Copyright 2009 East Jordan Iron Works, Inc.