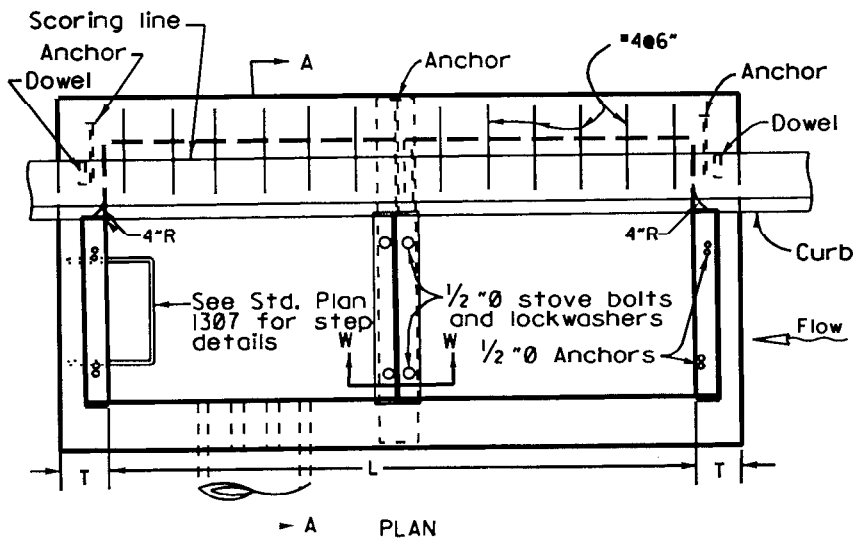
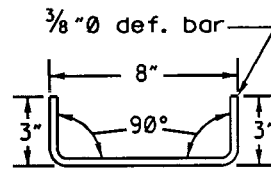


SECTION A-A

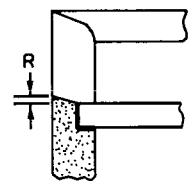
STEEL LIST	
Number of gratings	#4 bars 11" long
Face Plate	(see Std. Plan 1306)
Dowels	Anchors
3/4" galv. stl. steps	Reinforcing steel
Protection Bar	(See Std. Plan 1306)
1 5	3'-10 ⁷ / ₈ "
2 12	7'-3 ³ / ₄ "
3 19	10'-8 ⁷ / ₈ "
	2 2
	2 3
	2 4
	See Notes
	#3
	3/4" Ø



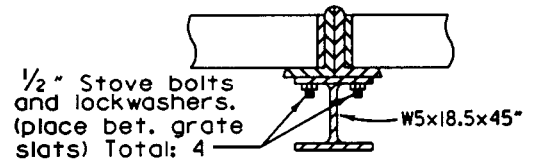
PLAN



DOWEL DETAIL



END WALL DETAIL



SECTION W-W

ORANGE COUNTY RESOURCES & DEVELOPMENT MANAGEMENT DEPARTMENT

STD. PLAN

Approved

H. I. Nakasone
H. I. Nakasone, Chief Engineer

Adopted: Res. 77-92

Revised: Res. 82-718; 86-1141; 96-546; 06-010

1304

INLET TYPE IV

SHT. 1 OF 2

NOTES:

1. BASIN shall have one grating unless otherwise specified.
2. CURB OPENING shall conform to curb alignment.
3. CURVATURE of the end walls at the curb opening shall be formed by curved forms and shall not be made by plastering.
4. DIMENSIONS:
 - HIKE-UP shall be in same plane as local depression.
 - $R=1/2$ " for lower end wall of a single basin, or the lowest basin of a series of spread basins.
 - R=0 for all other end walls.
 - X=8" for Type "A2-8" Curb.
 - $X=8\frac{1}{2}$ " for Type "A3-8" or "A2-6" Curb.
 - T=6" for H=8' or less.
 - T=8" for H=8'-1" to 20'.
 - H=3'-6" unless otherwise specified.
 - $L=2'-10\frac{7}{8}$ " for one grating. Add $3'-4\frac{7}{8}$ " for each additional grating.
 - (See Note 4, Std. Plan 1306 when L = 7'.)
5. EXPOSED SURFACES of the catch gasin shall conform in slope, grade, color, finish and scoring to existing improvements adjacent to the basin. The top shall be finished to conform to standard sidewalk slope and finish where no sidewalk exists.
6. OUTLET PIPE shall be trimmed to the final shape and length before concrete is placed.
7. SLOPE of floor parallel with curb shall be 12:1 unless otherwise specified. Slope floor from all directions to the outlet.
8. MISCELLANEOUS: See job plans for lengths. See Std. Plans 1306, 1307 and 1308 for Face Plate, Face Plate Anchorage, Misc. Inlet details, additional notes, Grate and Frame details, Step details and Local Depression details.
- * 9. When the outlet pipe is constructed within the roadway a min. of 30" (Co. Ord. No. 63.0322,1961) OR the roadway structural section thickness plus 6", whichever is greater, shall be maintained between the top of pipe and the roadway surface.
10. The following shall be stencilled using 2 inch high letters and black paint on the face of the curb adjacent to the inlet (either side) and on the top of the inlet:

**NO DUMPING
DRAINS TO OCEAN**

ORANGE COUNTY RESOURCES & DEVELOPMENT MANAGEMENT DEPARTMENT

Approved _____

H. I. Nakasone
H. I. Nakasone, Chief Engineer

Adopted: Res. 77-92

Revised: Res. 82-718; 86-1141; 96-546; 06-010

STD. PLAN

1304

INLET TYPE IV

SHT. 2 OF 2