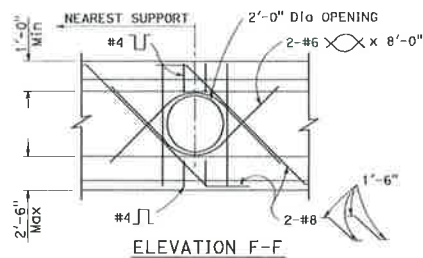
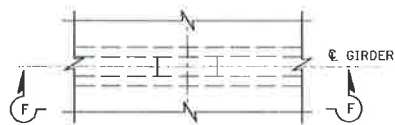


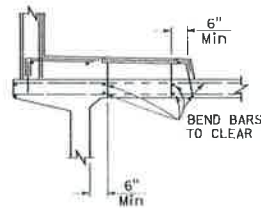
350



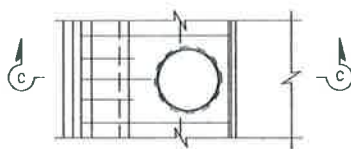
ELEVATION F-F



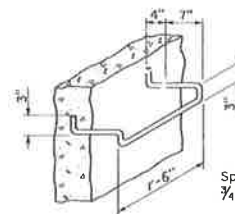
PART PLAN
GIRDER STEM ACCESS OPENING
DETAIL U41



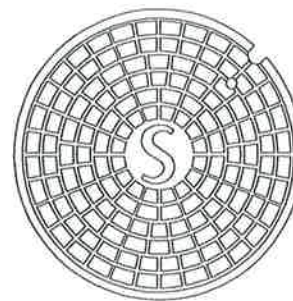
SECTION C-C



PART PLAN
SIDEWALK ACCESS OPENING
DETAIL U42



BAR STEP
LADDER RUNG DETAILS
DETAIL U44



TOP OF MANHOLE COVER



SECTION THROUGH FRAME

NON-ROCKING MANHOLE FRAME & COVER
FOR DECKS
DETAIL U45

NOTES:

- Step inserts may be substituted for the standard step detail. Step Inserts shall comply with State Industrial Safety requirements.
- Covers for use on sewer structures shall bear the letter "S"; on storm drain structures the letter "D"; on openings for utilities the letter "U".

| DIST. | COUNTY | ROUTE | POST MILES | SHEET NO. | TOTAL SHEETS |
|-------|--------|-------|------------|-----------|--------------|
| | | | | | |

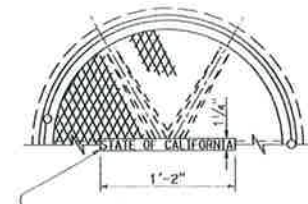
Felix W. Norloe
REGISTERED CIVIL ENGINEER

May 31, 2018
PLANS APPROVAL DATE

Felix W. Norloe
No. C57519
Exp. 12-31-19
EIT

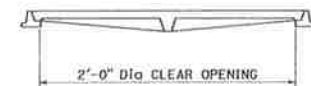
REGISTERED PROFESSIONAL ENGINEER
STATE OF CALIFORNIA

THE STATE OF CALIFORNIA ON ITS OFFICERS AND AGENTS SHALL NOT BE RESPONSIBLE FOR THE ACCURACY OR COMPLETENESS OF SCANNED COPIES OF THIS PLAN SHEET.



LETTERS 1" HIGH. NO OTHER INSCRIPTION TO APPEAR ON EXPOSED SURFACES.

TOP OF MANHOLE FRAME & COVER



SECTION THROUGH FRAME & COVER

MANHOLE FRAME & COVER
FOR SIDEWALKS
DETAIL U46

NOTES:

- Frame and cover shall be cast iron.
- Cover shall be supplied with bolt down or locking devices.

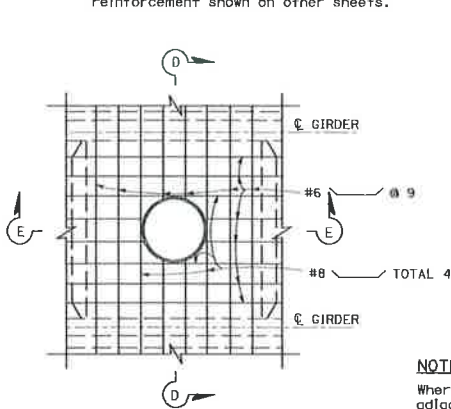
STATE OF CALIFORNIA
DEPARTMENT OF TRANSPORTATION
UTILITY DETAILS

NO SCALE

B7-11

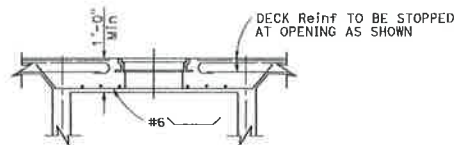
NOTES:

- For exact location of openings see other sheets.
- Location and size of manholes may be modified as directed by the Engineer, provided minimum dimensions are maintained.
- All reinforcement detailed to be placed in addition to reinforcement shown on other sheets.

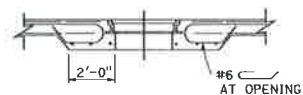


PART PLAN

DECK ACCESS OPENING
DETAIL U43



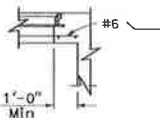
SECTION D-D



SECTION E-E

NOTE:

Where manhole is located adjacent to a diaphragm or abut, substitute half Section E-E on one side of Section E-E.



HALF SECTION E-E

2018 STANDARD PLAN B7-11