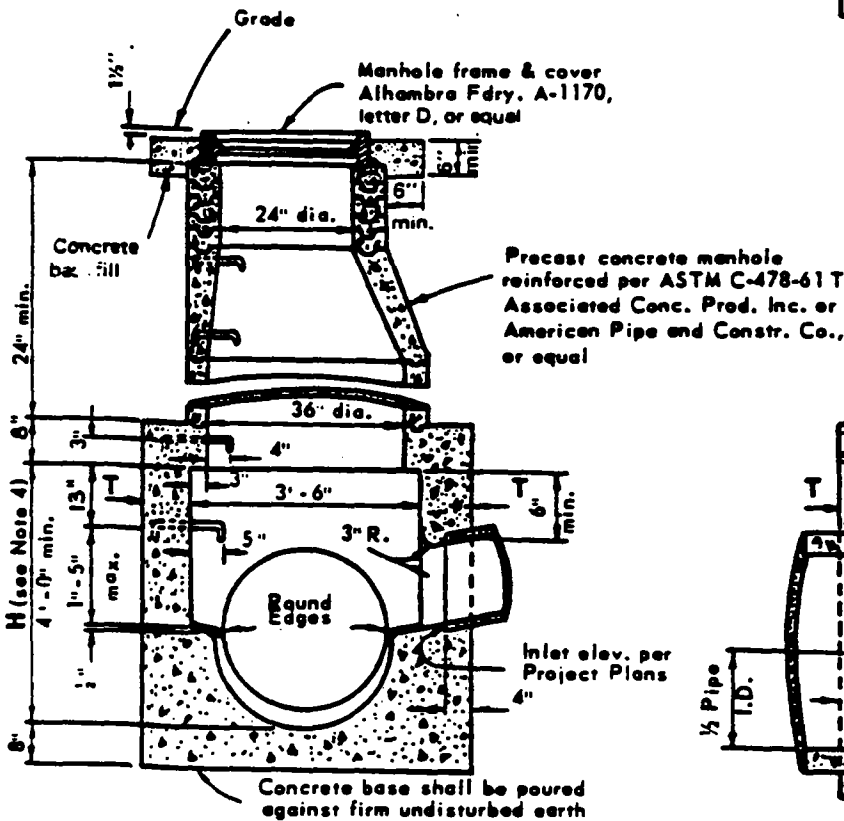
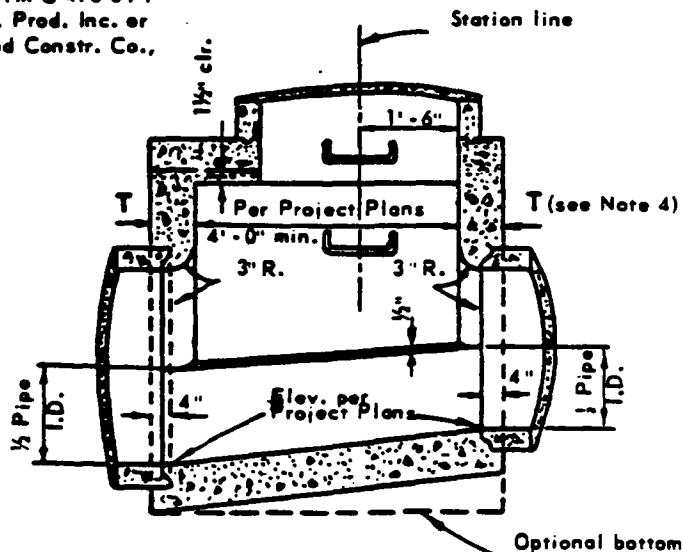


PLAN
(shaft not shown)



SECTION A-A



SECTION B-B

NOTES

1. Concrete shall be Class 560-C-3250 with a maximum slump of 5".
2. Floor of manhole shall be steel-troweled.
3. Precast manhole sections shall be set in mortar with inside joints neatly struck and pointed and not exceeding 3/8" in thickness.
4. Thickness T shall be 8" for H up to and including 8 ft. and shall be 10" for values of H over 8 ft.
5. Steps shall be 3/4" galv. steel as Alhambra Fdry. A-3320, or equal.
6. Backfill for manhole shall be either a) Sand compacted to 95% or b) 2 sack slurry mix as required by the City Engineer.

C	3-14-83	Rev. 7
B	6-16-78	Rev. 6
A	8-26-76	Rev. 5
Revised		By

CITY OF ANAHEIM
DEPARTMENT OF PUBLIC WORKS
ENGINEERING DIVISION

MANHOLE NO. 1
33" or smaller pipe

APP *Horton Powell* 2/16/67
Director of Public Works Date

APP *James T. Maddox* 2-16-67
City Engineer Date

STANDARD
DETAIL NO. 309-C