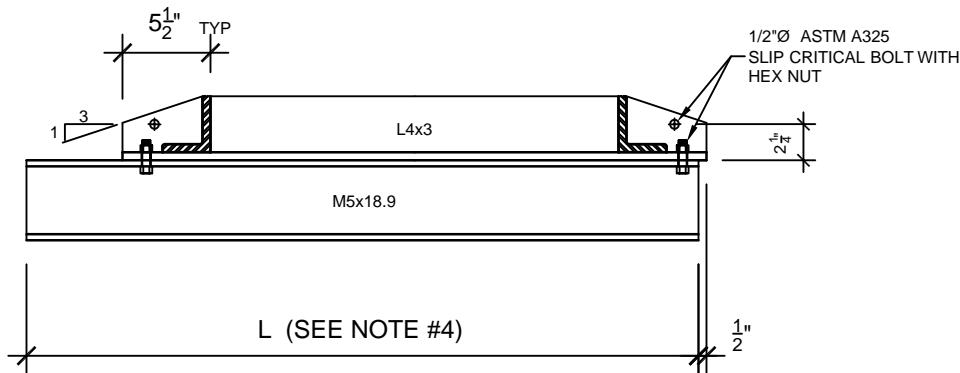


1/2"Ø ASTM A325  
SLIP CRITICAL BOLT  
WITH HEX NUT (TYP)

SECTION C-C



ELEVATION  
CENTER SUPPORT ASSEMBLY

**NOTES :**

1. UNLESS SPECIFIED OTHERWISE, ALL METAL PARTS SHOWN HEREON SHALL BE ASTM A36 STEEL CONFORMING TO SECTION 206-1 OF THE STANDARD SPECIFICATIONS FOR PUBLIC WORKS CONSTRUCTION (SSPWC). ALL BOLTS SHALL BE ASTM A325 SLIP CRITICAL BOLT WITH HEX NUT.
2. ALL METAL PARTS (INCLUDE NUTS AND BOLTS) SHALL BE HOT - DIP GALVANIZED IN ACCORDANCE WITH SECTION 210-3 OF THE SSPWC AFTER FABRICATION.
3. 3/8"Ø CROSS BARS MAY BE FILLET WELD, RESISTANCE WELDED OR ELECTROFORGED TO THE BEARING BARS.
4. L = 36 INCHES FOR CURBSIDE GRATING BASINS AND ALLEY GRADING BASINS.  
L = 45 INCHES FOR COMBINATION CATCH BASINS.  
L = 64 INCHES FOR CURB OPENING CATCH BASINS WITH GRATING AND DEBRIS SKIMMER.
5. FRAME AND GRATING SHALL BE INSTALLED WITH LONGITUDINAL BEARING BARS ALIGNED WITH THE DIRECTION OF THE GUTTER FLOW.

**LBIW Inc.**  
2020 WEST 14TH STREET  
LONG BEACH, CA. 90813  
Tel No. : (562) 432.5451  
Fax No. : (562) 432.5929  
www.lbiw.com  
FOUNDRY & FABRICATION

**PRODUCT NUMBER**

**LB S-342**

**LOAD RATING**  
BICYCLE FRIENDLY  
TRAFFIC RATED

**COATING**

GALVANIZED

**EST. WEIGHT**

FRAME	135 IBS
GRATE	225 IBS
<b>TOTAL WT.</b>	<b>360 IBS</b>

**SPECIFICATION**

COLA DEPARTMENT OF  
PUBLIC WORKS S-342-4

**OPEN AREA**

**DESIGNATES MACHINED**

<b>DRAWN</b>	<b>DATE</b>
EB	02-06-09
<b>REVISED</b>	<b>DATE</b>
04-21-09	

**REFERENCE INFORMATION**

SHEET 2 OF 2

SECTION 07