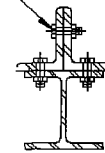
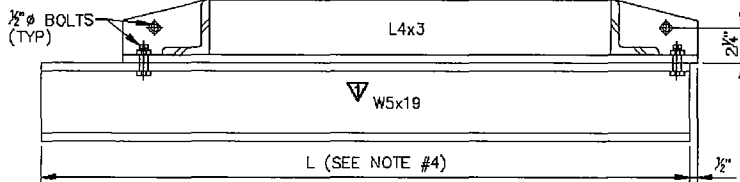


PARTIAL PLAN

▽ 1/2" Ø ASTM A325  
SLIP CRITICAL BOLT  
WITH HEX NUT (TYP).



SECTION A-A



ELEVATION  
CENTER SUPPORT ASSEMBLY

NOTES:

- ▽ 1. UNLESS SPECIFIED OTHERWISE, ALL METAL PARTS SHOWN HEREON SHALL BE ASTM A36 STEEL CONFORMING TO SECTION 206-1 OF THE STANDARD SPECIFICATIONS FOR PUBLIC WORKS CONSTRUCTION (SSPWC). ALL BOLTS SHALL BE ASTM A325 SLIP CRITICAL BOLT WITH HEX NUT.
2. ALL METAL PARTS (INCLUDE NUTS & BOLTS) SHALL BE HOT-DIP GALVANIZED IN ACCORDANCE WITH SECTION 210-3 OF THE SSPWC AFTER FABRICATION.
3. 3/8" Ø CROSS BARS MAY BE FILLET WELDED, RESISTANCE WELDED OR ELECTROFORGED TO THE BEARING BARS.
4. L = 36 INCHES FOR CURBSIDE GRATING BASINS AND ALLEY GRADING BASINS.  
L = 45 INCHES FOR COMBINATION CATCH BASINS.  
L = 64 INCHES FOR CURB OPENING CATCH BASINS WITH GRATING AND DEBRIS SKIMMER.
5. FRAME AND GRATING SHALL BE INSTALLED WITH LOGITUDINAL BEARING BARS ALIGNED WITH THE DIRECTION OF THE GUTTER FLOW.