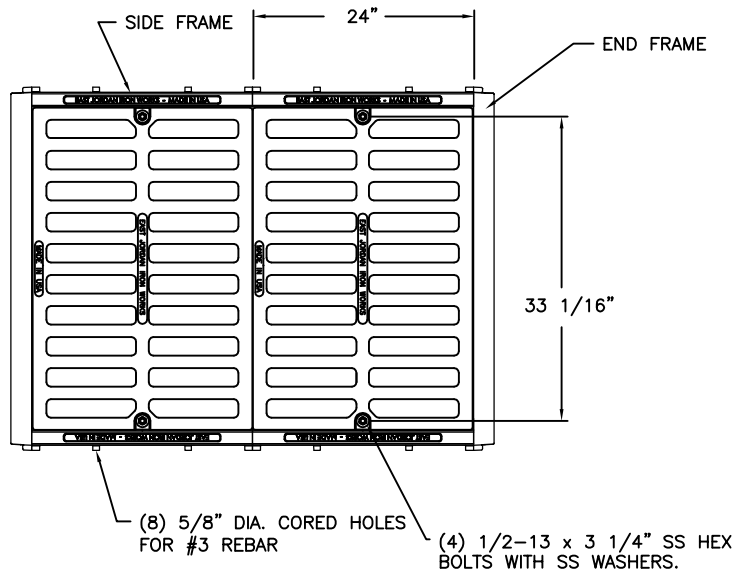
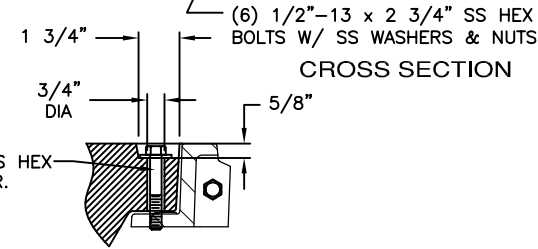
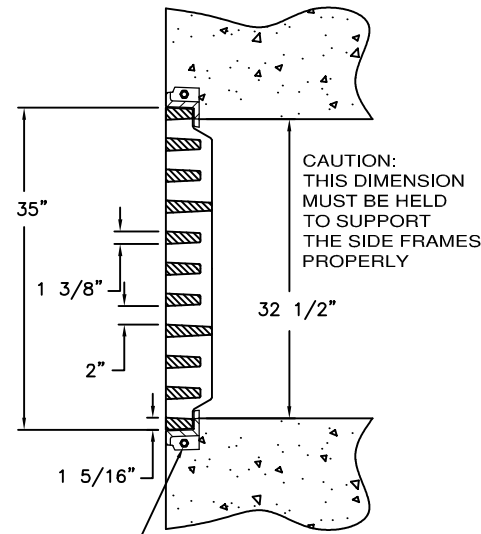
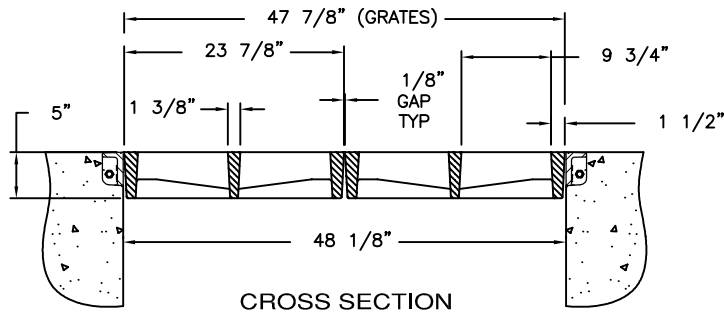


5436-2 ASSEMBLY



CAUTION:
DO NOT
DISASSEMBLE
BOLTED GRATES
BEFORE SETTING
SECTIONS IN
CONCRETE.



COUNTERBORE DETAIL

PRODUCT NUMBER

00543604

DESIGN FEATURES

MATERIALS

GRATES-DUCTILE IRON
ASTM A536

FRAME-GRAY IRON
ASTM A48 CL35B

DESIGN LOAD

EXTRA HEAVY DUTY
(PROOF-LOAD TESTED TO
200,000 LBS)

COATING

DIPPED

OPEN AREA

769 SQ. IN. (4961 SQ. CM.)

√ DESIGNATES MACHINED
SURFACE

SPECIAL FEATURES

ALTERNATE OPTIONS

REFERENCE INFORMATION

00543612
00543614
00543632

DRAWING DETAILS

ORIGINAL DRAWING: SBB 05/25/04

REVISED BY: SBB 02/24/11

Corporate
Headquarters
301 Spring Street
PO Box 439
East Jordan, MI
49727-0439
800.874.4100



Call Today for
More Information

800.626.4653

EJIW EAST JORDAN
IRON WORKS EST 1883
WE COVER YOUR INFRASTRUCTURE

www.ejiw.com
MADE IN THE USA

- Weights (lbs./kg.), dimensions (inches/mm.), and drawings provided for your guidance.
- We reserve the right to modify specifications without prior notice.
- Uncontrolled distribution.

CONFIDENTIAL: This drawing is the property of East Jordan Iron Works, Inc., and embodies confidential information, registered marks, trade secret information, and/or know how that is the property of East Jordan Iron Works, Inc. ©Copyright 2009 East Jordan Iron Works, Inc.