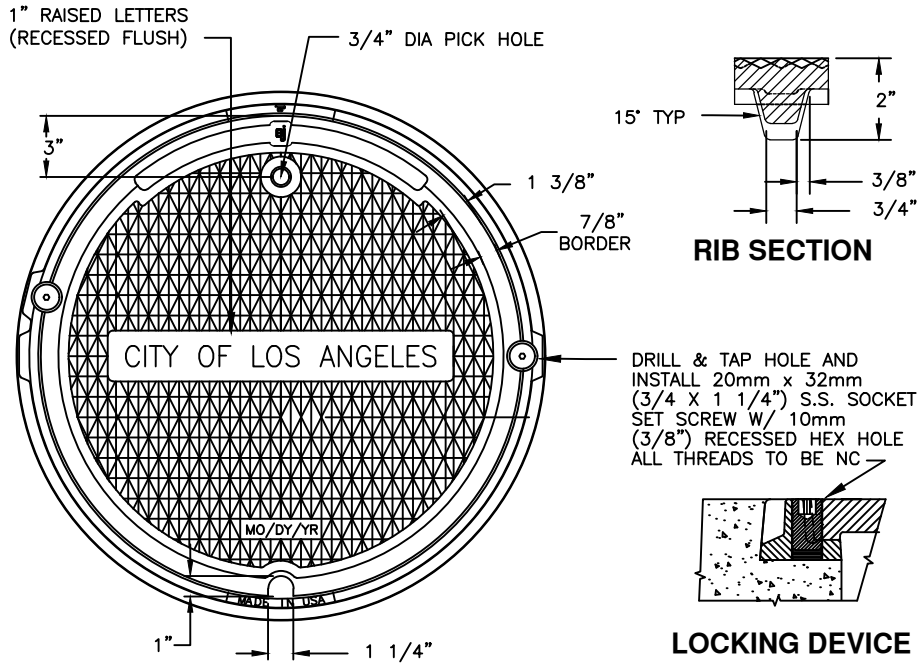


# 3110Z2 3110C1 Assembly



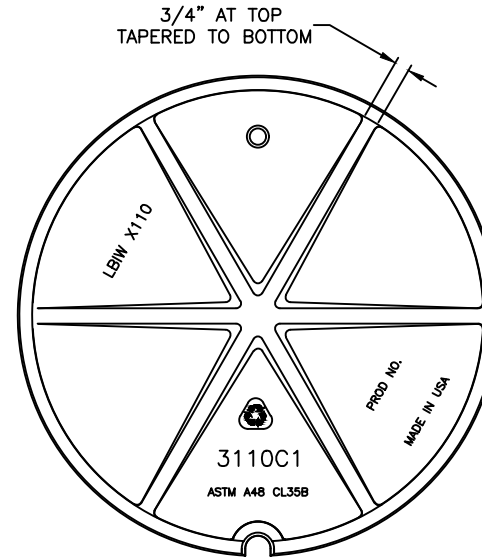
PLAN VIEW

RIB SECTION

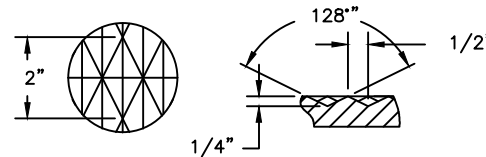
DRILL & TAP HOLE AND INSTALL 20mm x 32mm (3/4 X 1 1/4") S.S. SOCKET SET SCREW W/ 10mm (3/8") RECESSED HEX HOLE ALL THREADS TO BE NC



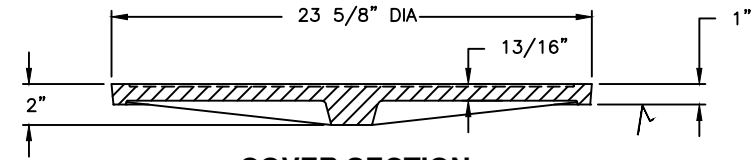
LOCKING DEVICE



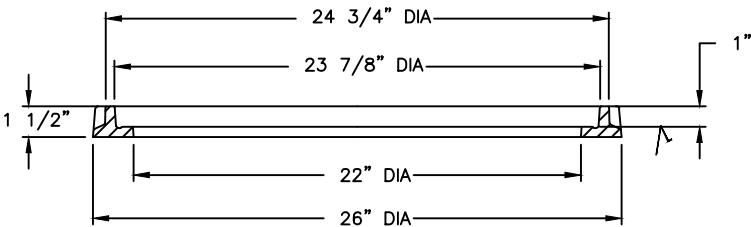
BOTTOM VIEW



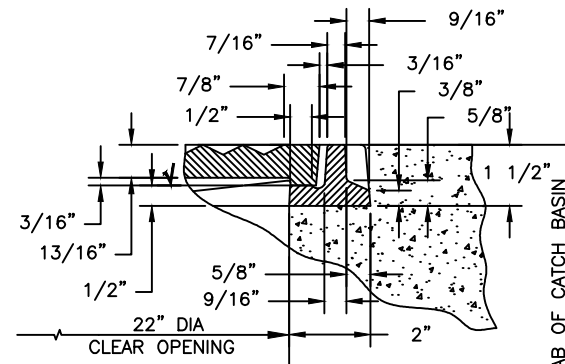
DIAMOND DETAIL



COVER SECTION



FRAME SECTION



SEATING DETAIL

**Product Number**  
00311000LA

**Design Features**  
-Materials  
Frame  
Gray Iron (CL35B)  
Cover  
Gray Iron (CL35B)

-Design Load  
Light Duty  
-Open Area  
n/a  
-Coating  
Water-Based Asphaltic  
-√ Designates Machined Surface

**Certification**  
- ASTM A48  
- AASHTO M306  
- Country of Origin: USA

**Major Components**  
00311012  
00311020

**Drawing Revision**  
11/12/2005 Designer: SBB  
5/19/2023 Revised By: KK

**Disclaimer**  
Weights (lbs./kg) dimensions (inches/mm) and drawings provided for your guidance. We reserve the right to modify specifications without prior notice.

CONFIDENTIAL: This drawing is the property of EJ GROUP, Inc., and embodies confidential information, registered marks, patents, trade secret information, and/or know how that is the property of EJ GROUP, Inc. Copyright © 2012 EJ GROUP, Inc. All rights reserved.

**Contact**  
800 626 4653  
ejco.com

- NOTE:**
1. NON-MACHINED SURFACE TOLERANCES SHALL BE  $\pm 1/8"$
  2. CASTING SHALL EXCEED PROOFLOAD OF 28,600 lb
  3. MANUFACTURED AT ARDMORE FOUNDRY, ARDMORE, OKLAHOMA, USA