

PRODUCT NUMBER

**00543601**

CATALOG NUMBER

**5436-1**

BOLTED AIRPORT  
ASSEMBLY

LOAD RATING  
EXTRA HEAVY DUTY  
(PROOF LOAD TESTED  
TO 200,000 LBS.)

COATING  
**UNDIPPED**

ESTIMATED WEIGHT  
EA. SIDE FRAME: 24 LBS  
EA. END FRAME: 36 LBS  
EA. COVER: 385 LBS  
UNIT: 505 LBS

MATERIAL SPECIFICATION  
COVER - DUCTILE IRON  
ASTM A536  
FRAME - GRAY IRON  
ASTM A48 CL35B

OPEN AREA  
NA

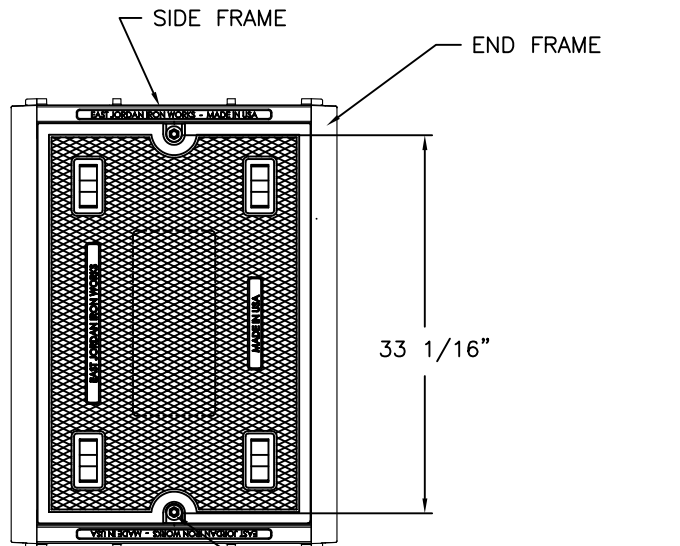
√ DESIGNATES MACHINED  
SURFACE

DRAWN SBB	DATE 05/25/04
--------------	------------------

LAST REVISED SBB	DATE 03/10/10
---------------------	------------------

REFERENCE INFORMATION

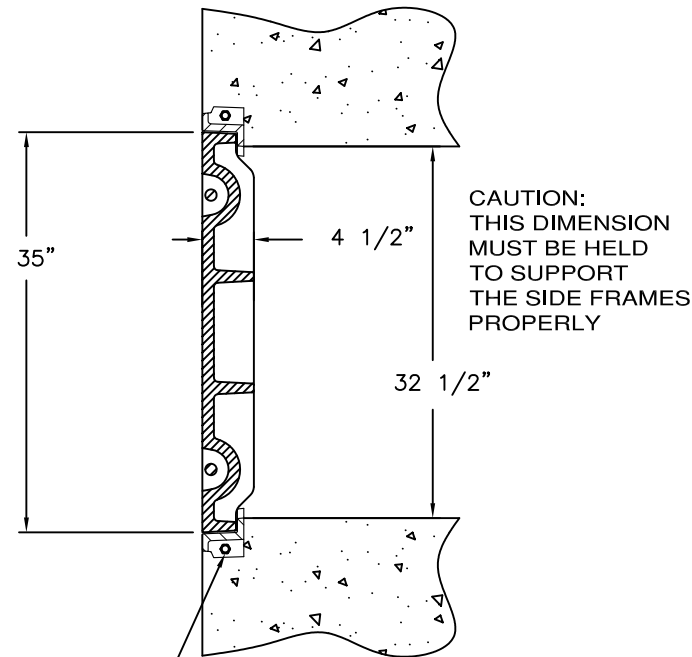
00543612 00543614  
00543623



(2) 1/2"-13 x 3 1/4" SS HEX  
BOLTS WITH SS WASHERS.

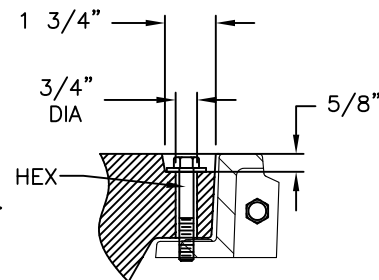
(4) 5/8" DIA. CORED HOLES  
FOR #3 REBAR

**CAUTION:  
DO NOT  
DISASSEMBLE  
BOLTED GRATES  
BEFORE SETTING  
SECTIONS IN  
CONCRETE.**

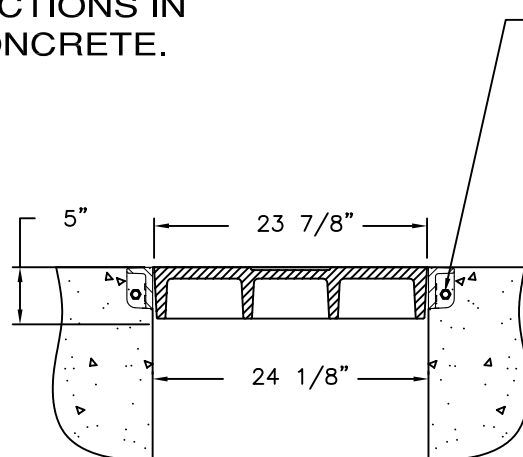


CROSS SECTION

(4) 1/2"-13 x 2 3/4" SS HEX  
BOLTS W/ SS WASHERS & NUTS

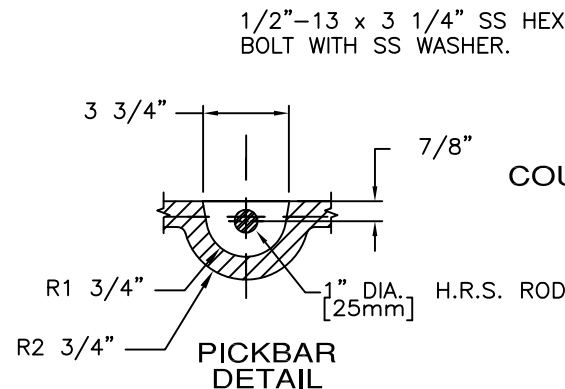


COUNTERBORE DETAIL



CROSS SECTION

(3) 5/8" DIA. CORED HOLES  
FOR #3 REBAR ON EACH  
END FRAME



PICKBAR  
DETAIL