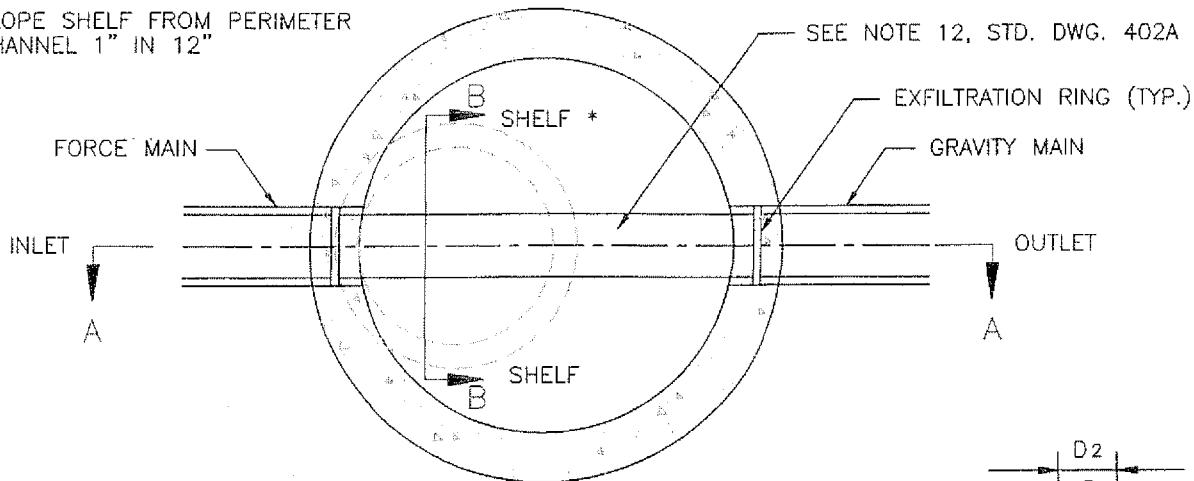
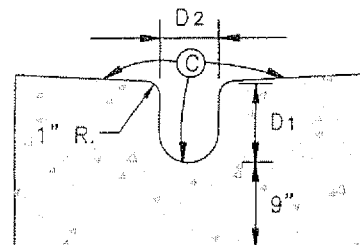


* SLOPE SHELF FROM PERIMETER CHANNEL 1" IN 12"

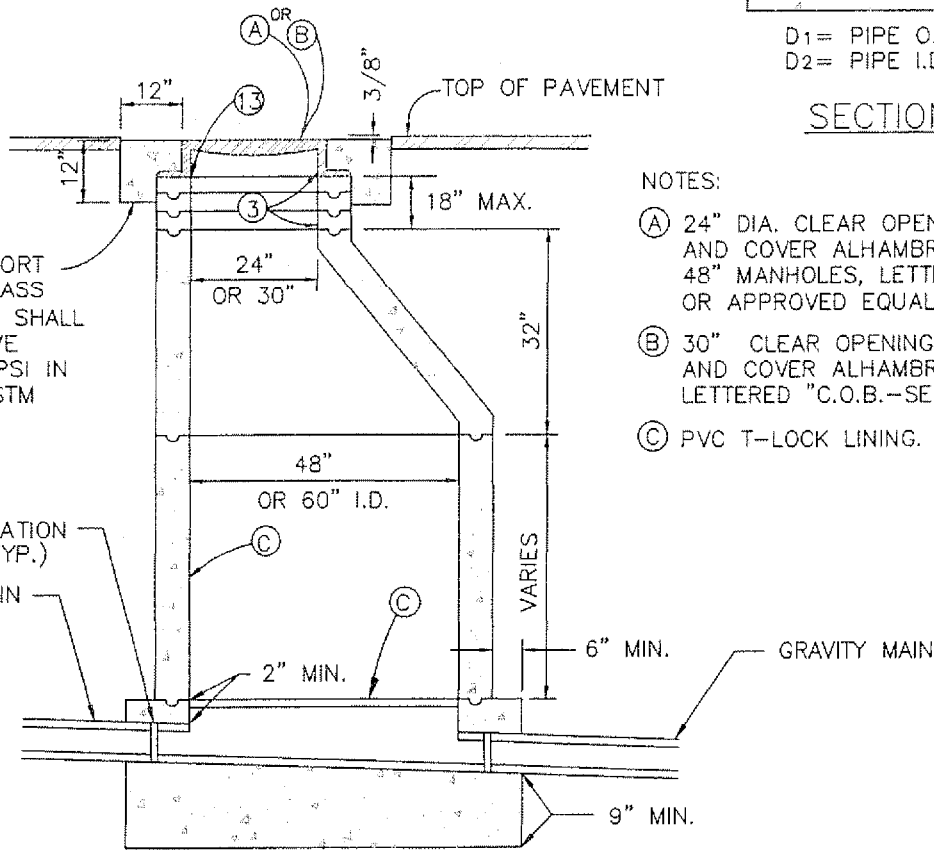


PLAN



D1 = PIPE O.D., 12" MIN.
D2 = PIPE I.D.

SECTION B-B

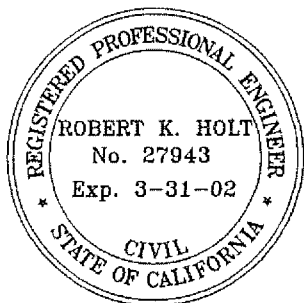


SECTION A-A

CONCRETE FOR SUPPORT COLLAR SHALL BE CLASS "3" CONCRETE WHICH SHALL ATTAIN A COMPRESSIVE STRENGTH OF 4000 PSI IN ACCORDANCE WITH ASTM C39/C39-99.

NOTES:

- (A) 24" DIA. CLEAR OPENING MANHOLE FRAME AND COVER ALHAMBRA #A-1254B FOR 48" MANHOLES, LETTERED "C.O.B.-SEWER" OR APPROVED EQUAL.
- (B) 30" CLEAR OPENING MANHOLE FRAME AND COVER ALHAMBRA #A-1252B LETTERED "C.O.B.-SEWER," O.A.E.
- (C) PVC T-LOCK LINING.



APPROVED: PUBLIC WORKS DIRECTOR

James W. Rodkey, Jr.
JAMES W. RODKEY, JR.

DATE 9/7/00

APPROVED: CITY ENGINEER

Robert K. Holt
ROBERT K. HOLT, P.E.

DATE 8/31/00

CITY OF
BLYTHE

PVC LINED MANHOLE

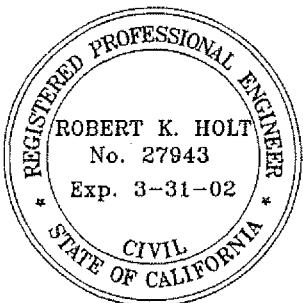
REVISION

BY DATE

STANDARD DRAWING NO. SS-405

GENERAL NOTES:

1. MANHOLE SECTIONS SHALL BE PRECAST REINFORCED CONCRETE HAVING A MINIMUM THICKNESS OF SIX INCHES AND CONFORMING TO ASTM C-478 REQUIREMENTS FOR MATERIALS AND MANUFACTURE AND ASTM REQUIREMENTS FOR REINFORCEMENT.
2. VERTICAL WALL OF CONE SHALL BE OPPOSITE OUTLET SIDE OF MANHOLE.
3. CONE SHALL BE RAISED WHEN GRADE RINGS EXCEED 18".
4. JOINTS SHALL CONSIST OF 1-2 CEMENT MORTAR, NEATLY STRUCK AND POINTED, 3/8" MIN. THICKNESS, OR RAM-NECK, EXCEPT FOR GRADE ADJUSTING RINGS WHICH SHALL BE 1-2 CEMENT MORTAR ONLY.
5. CONCRETE SHALL BE CLASS "3" CONCRETE WHICH SHALL ATTAIN A 28-DAY COMPRESSIVE STRENGTH OF 4000 PSI IN ACCORDANCE WITH ASTM C39/C39M-99 AND SHALL CONTAIN 1-1/2 LBS. POLYPROPYLENE FIBER PER CUBIC YARD. FIBER BY FIBERMESH CO., FORTA MONO, O.A.E.
6. SHELF SHALL HAVE A MEDIUM BROOM FINISH.
7. THE MAXIMUM DROP BETWEEN THE OUTLET AND INLET OF THIS STRUCTURE IS 0.60' FOR STRAIGHT THROUGH FLOW AND 1.00' FOR SIDE INLET FLOW.
8. THIS MANHOLE IS FOR DEPTHS GREATER THAN 3'-0" AND LESS THAN 20'. MAXIMUM PIPE INTERNAL DIAMETER IS 24".
9. TROUGH:
 - A. SHALL NOT HAVE A FLAT BOTTOM.
 - B. SHALL HAVE A STEEL TROWELED FINISH.
 - C. DIAMETER OF FEEDLINE SHALL NOT "FLARE OUT" WHERE IT JOINS THE MAINLINE TROUGH.
10. "JIFFY RINGS" SHALL NOT BE ALLOWED.
11. FOR STRAIGHT THROUGH FLOW ONLY. A "Y" SHALL NOT BE CONSTRUCTED.
12. MANHOLE INTERIOR SHAFT, CONE AND BASE SHALL BE T-LOCK (O.A.E.) PVC LINED. PVC LINING TO EXTEND TO TOP OF RING AND COVER. IT SHALL BE SECURELY ATTACHED THERETO.
13. MANHOLE RING AND COVER SHALL BE RAISED TO FINISHED GRADE AND SUPPORT COLLAR INSTALLED AFTER PAVING OR FINE GRADING.
14. EXFILTRATION RINGS SHALL BE CONSISTENT WITH PIPE MANUFACTURER'S RECOMMENDATIONS.



APPROVED: PUBLIC WORKS DIRECTOR
James W. Rodkey Jr. DATE *9/7/00*
 JAMES W. RODKEY, JR.
 APPROVED: CITY ENGINEER
Robert K. Holt DATE *8/31/00*
 ROBERT K. HOLT, P.E.

CITY OF
BLYTHE
 PVC LINED MANHOLE
 STANDARD DRAWING NO. SS-405A

REVISION	BY	DATE