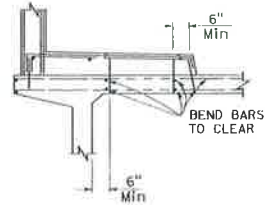
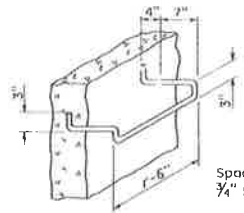


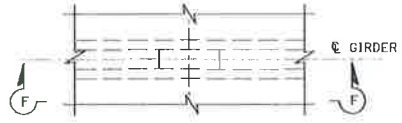
ELEVATION F-F



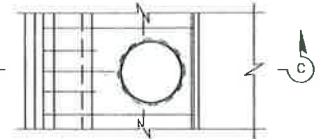
SECTION C-C



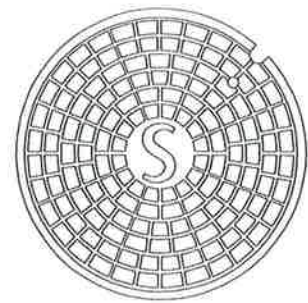
BAR STEP
LADDER RUNG DETAILS
DETAIL U44



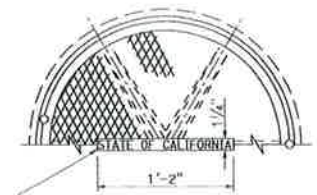
PART PLAN
GIRDER STEM ACCESS OPENING
DETAIL U41



PART PLAN
SIDEWALK ACCESS OPENING
DETAIL U42



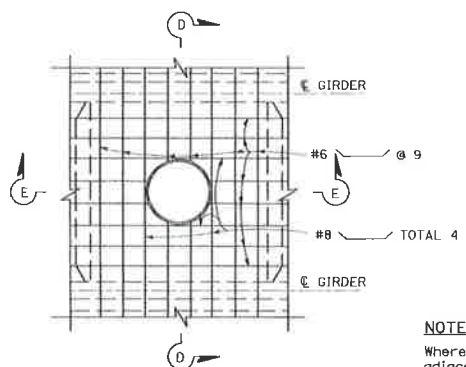
TOP OF MANHOLE COVER



TOP OF MANHOLE FRAME & COVER

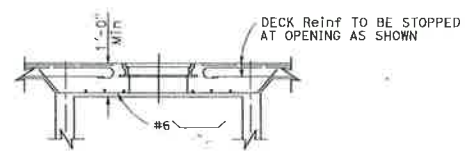
NOTES:

1. For exact location of openings see other sheets.
2. Location and size of manholes may be modified as directed by the Engineer, provided minimum dimensions are maintained.
3. All reinforcement detailed to be placed in addition to reinforcement shown on other sheets.

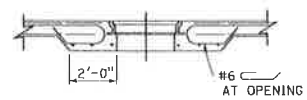


PART PLAN

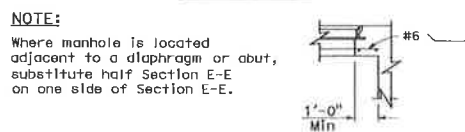
DECK ACCESS OPENING
DETAIL U43



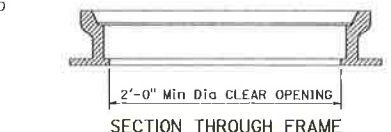
SECTION D-D



SECTION E-E



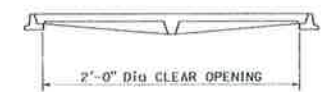
HALF SECTION E-E



SECTION THROUGH FRAME
NON-ROCKING MANHOLE FRAME & COVER
FOR DECKS
DETAIL U45

NOTES:

1. Step inserts may be substituted for the standard step detail. Step inserts shall comply with State Industrial Safety requirements.
2. Covers for use on sewer structures shall bear the letter "S" on storm drain structures the letter "D"; on openings for utilities the letter "U".



SECTION THROUGH FRAME & COVER
MANHOLE FRAME & COVER
FOR SIDEWALKS
DETAIL U46

NOTES:

1. Frame and cover shall be cast iron.
2. Cover shall be supplied with bolt down or locking devices.

DIST.	COUNTY	ROUTE	POST MILES	SHEET NO.	TOTAL SHEETS

Peter W. Harber
 REGISTERED CIVIL ENGINEER
 No. 657919
 Exp. 12-31-19
 STATE OF CALIFORNIA

May 31, 2018
 PLANS APPROVAL DATE
 THE STATE OF CALIFORNIA ON ITS OFFICERS OR AGENTS SHALL NOT BE RESPONSIBLE FOR THE ACCURACY OR COMPLETENESS OF SCANNED COPIES OF THIS PLAN SHEET.

STATE OF CALIFORNIA
DEPARTMENT OF TRANSPORTATION

UTILITY DETAILS

NO SCALE