

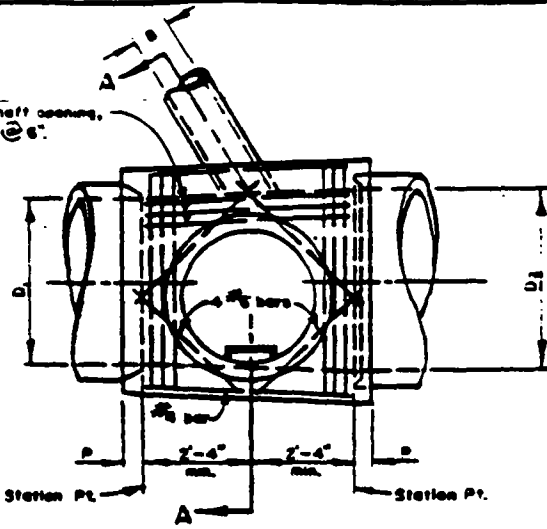
TABLE OF BAR SIZES

| D ₂ | F Bars |
|----------------|--------|
| 36"-39" | #4 |
| 42"-84" | #5 |
| 90"-144" | #6 |

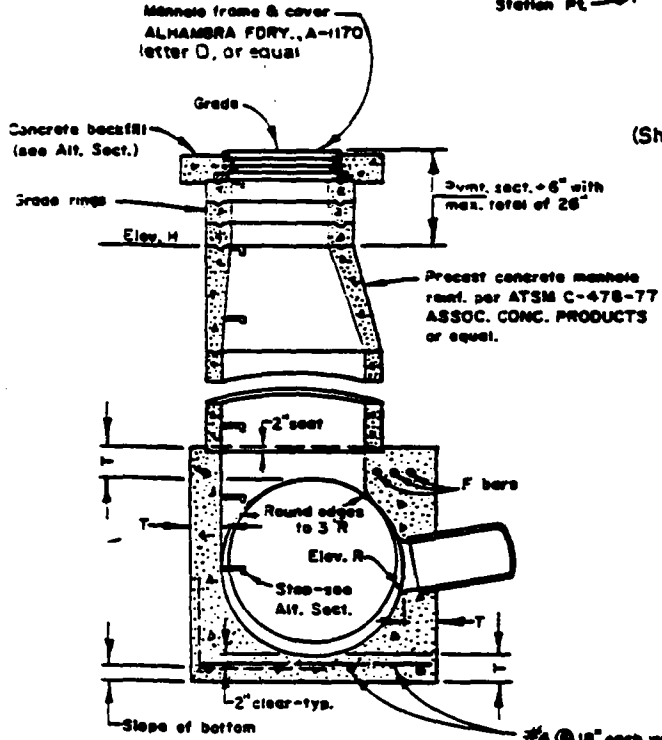
3 F Bars @ 3' around shaft opening, continue additional bars @ 6'.

TABLE OF VALUES FOR T

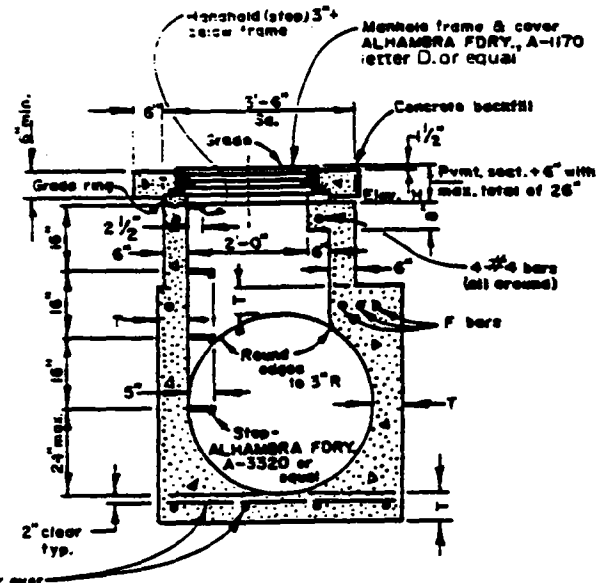
| D ₂ | T |
|----------------|-----|
| 36"-48" | 8" |
| 51"-57" | 9" |
| 60"-63" | 10" |
| 66"-72" | 11" |
| 78" | 12" |
| 84"-90" | 13" |
| 96" | 14" |
| 102"-108" | 16" |
| 114"-126" | 17" |
| 132"-144" | 18" |



PLAN
(Shaft not shown)



SECTION A-A



ALTERNATE SECTION
(For shaft height less than 3'-6")

NOTES-

- 1-VALUES for D₂, Elevations H & R and at station points, are shown on project plans.
- 2-EMBEDMENT P shall be 5" for D₂=96" or less and 8" for D₂ over 96".
- 3-LATERALS: If laterals enter both sides of manhole, access shaft shall be located on side receiving the smaller lateral.
- 4-FLOOR OF MANHOLE shall be steel troweled to spring line.
- 5-LENGTH OF MANHOLE may be increased at option to meet pipe ends.
- 6-BODY OF MANHOLE, including lateral, shall be constructed in one continuous operation, except that a construction joint at the spring line, with longitudinal keyway, is permitted.
- 7-CONCRETE shall be Class 560-C-3250 with a maximum slump of 5".
- 8-PRECAST MANHOLE SECTIONS shall be seated in mortar with inside joints neatly struck and pointed.
- 9-BACKFILL for manhole shall be either a) Sand compacted to 95% or b) 2 sack slurry mix as required by the City Engineer.

| | | |
|---|---------|-----|
| B | 1-23-79 | 289 |
| A | 3-11-79 | 287 |
| | Revised | By |

CITY OF ANAHEIM
DEPARTMENT OF PUBLIC WORKS
ENGINEERING DIVISION

MANHOLE NO. 2
Outlet 36" or larger
O.D. lateral shall be less than half the avg. I.D. of mainline, with 30" max.

APP *Sharon Russell* 2-13-79
Director of Public Works Date

APP *William S. West* 2-8-79
City Engineer Date

STANDARD
DETAIL NO. 311-B