

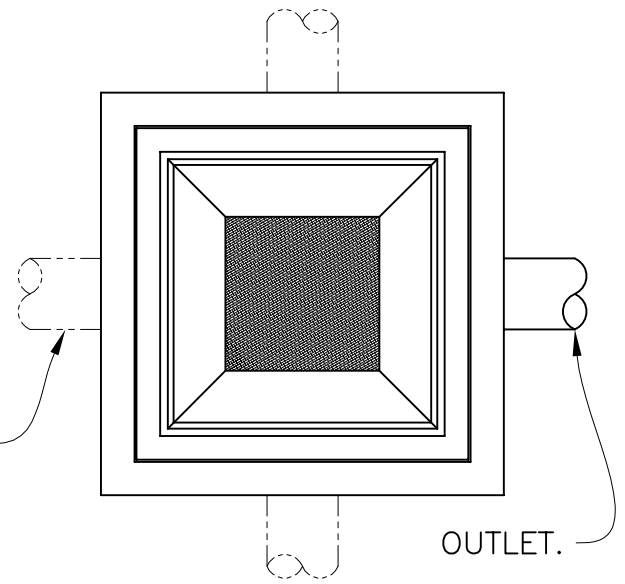
**SPECIFIER CHART**

MODEL	CATCH BASIN ID	SOLIDS STORAGE CAPACITY CUBIC FEET	FILTERED FLOW CUBIC FEET / SECOND	TOTAL BYPASS CAPACITY CUBIC FEET /SECOND
FG-M1818	18" X 18"	0.1	0.1	1.0
FG-M2424	24" X 24"	0.3	0.3	1.7
FG-M2436	24" X 36"	0.4	0.5	2.3
FG-M3636	36" X 36"	0.8	0.9	4.1
FG-M3648	36" X 48"	1.1	1.3	4.6
FG-M4848	48" X 48"	1.6	1.8	6.6

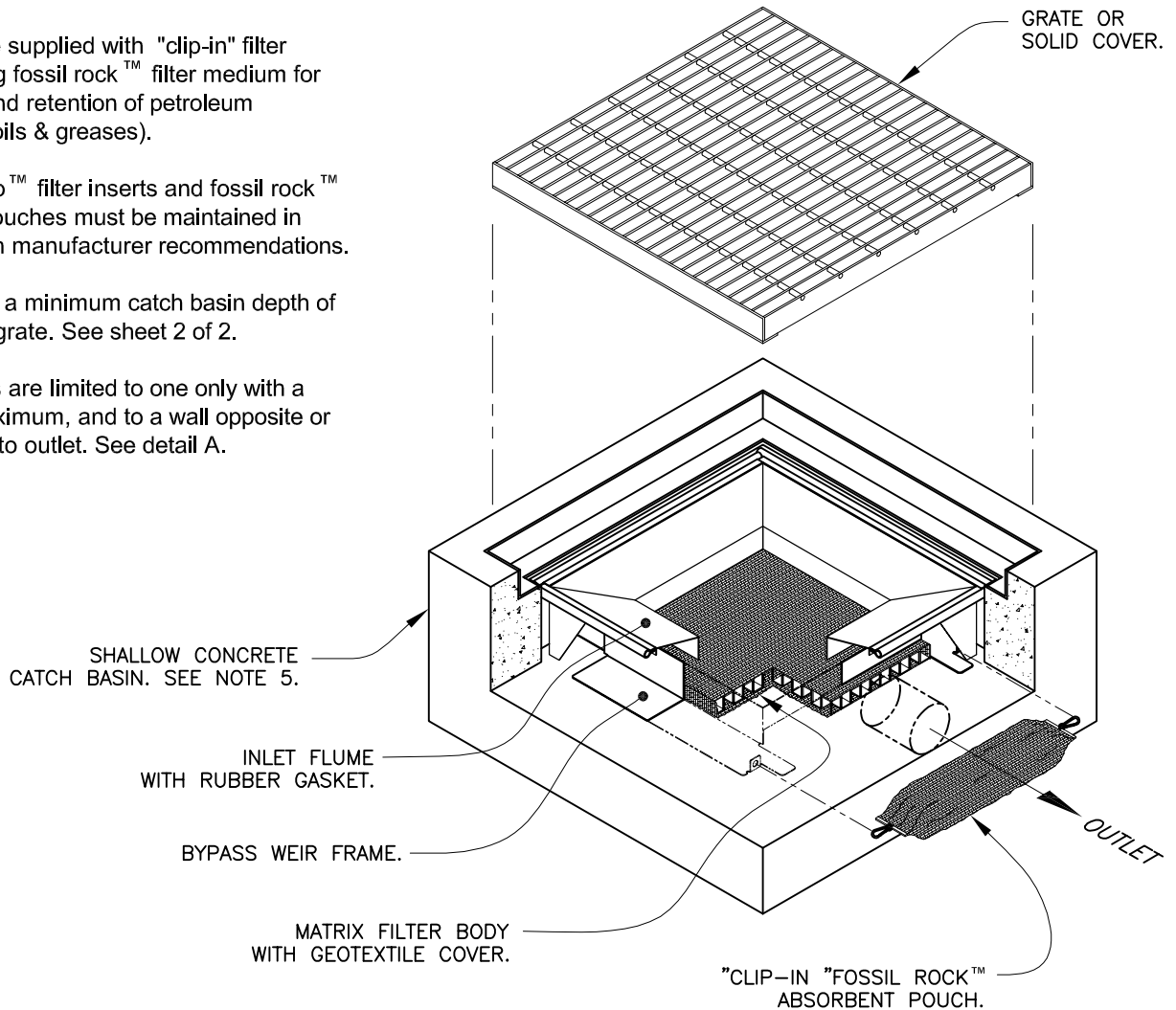
ADDITIONAL INLET OPTIONS CAN BE ACCOMODATED. SEE NOTE 6.

**NOTES:**

1. Inlet flume & bypass weir frame shall be constructed from stainless steel Type 304.
2. Matrix filter element is constructed from durable polypropylene woven monofilament geotextile surrounding a polypropylene matrix skeleton. Filter element shall not allow the retention of water between storm events.
3. Filter inserts are supplied with "clip-in" filter pouches utilizing fossil rock™ filter medium for the collection and retention of petroleum hydrocarbons (oils & greases).
4. FloGard® LoPro™ filter inserts and fossil rock™ filter medium pouches must be maintained in accordance with manufacturer recommendations.
5. Device requires a minimum catch basin depth of 6.50" beneath grate. See sheet 2 of 2.
6. Additional inlets are limited to one only with a 6" diameter maximum, and to a wall opposite or at a right angle to outlet. See detail A.



**DETAIL A**  
ADDITIONAL INLETS  
SCALE: 1X



TITLE

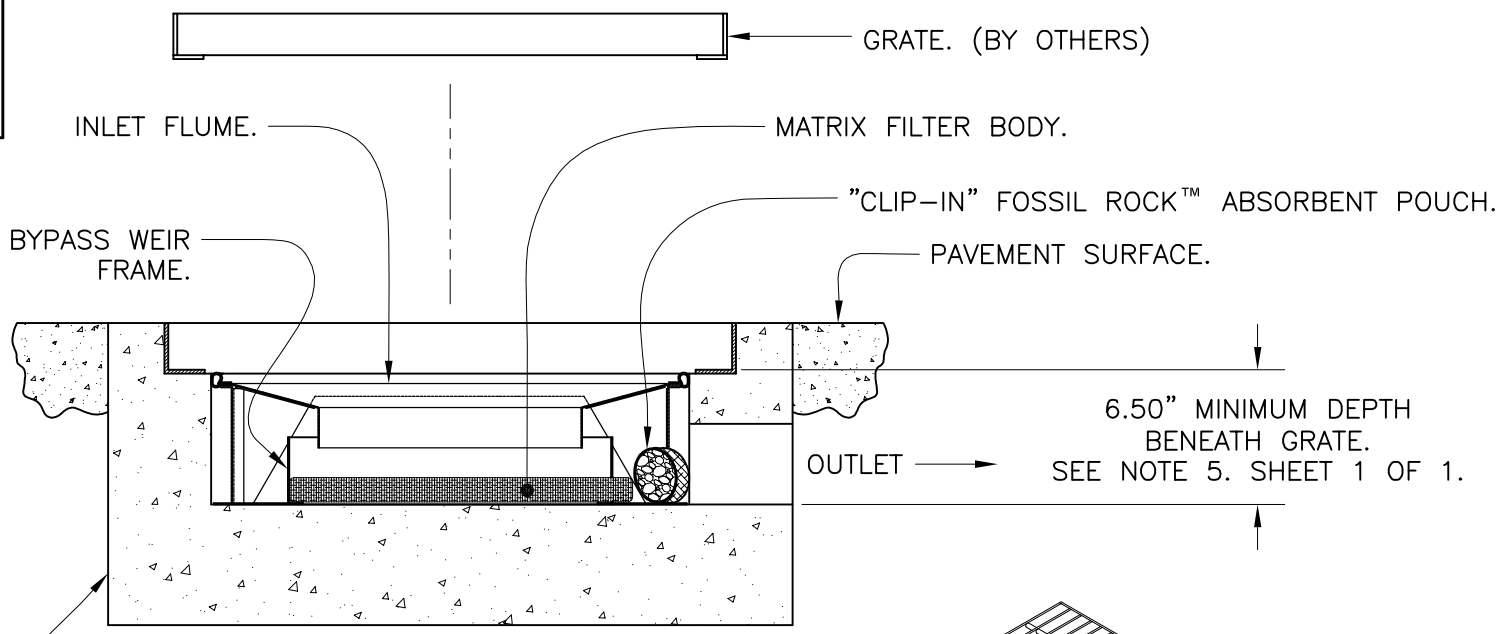
**FloGard® LoPro™**  
SHALLOW CATCH BASIN  
FILTER INSERT



**KriStar Enterprises, Inc.**

360 Sutton Place, Santa Rosa, CA 95407  
Ph: 800.579.8819, Fax: 707.524.8186, www.kristar.com

DRAWING NO. FG-LP-0001	REV C	ECO 0059 JPR 12/30/08	DATE JPR 12/18/06	SHEET 1 OF 2
---------------------------	----------	--------------------------	----------------------	--------------



**SECTION VIEW**  
SCALE: 2X

SHALLOW CONCRETE CATCH BASIN. (BY OTHERS)

GRATE OR SOLID COVER.

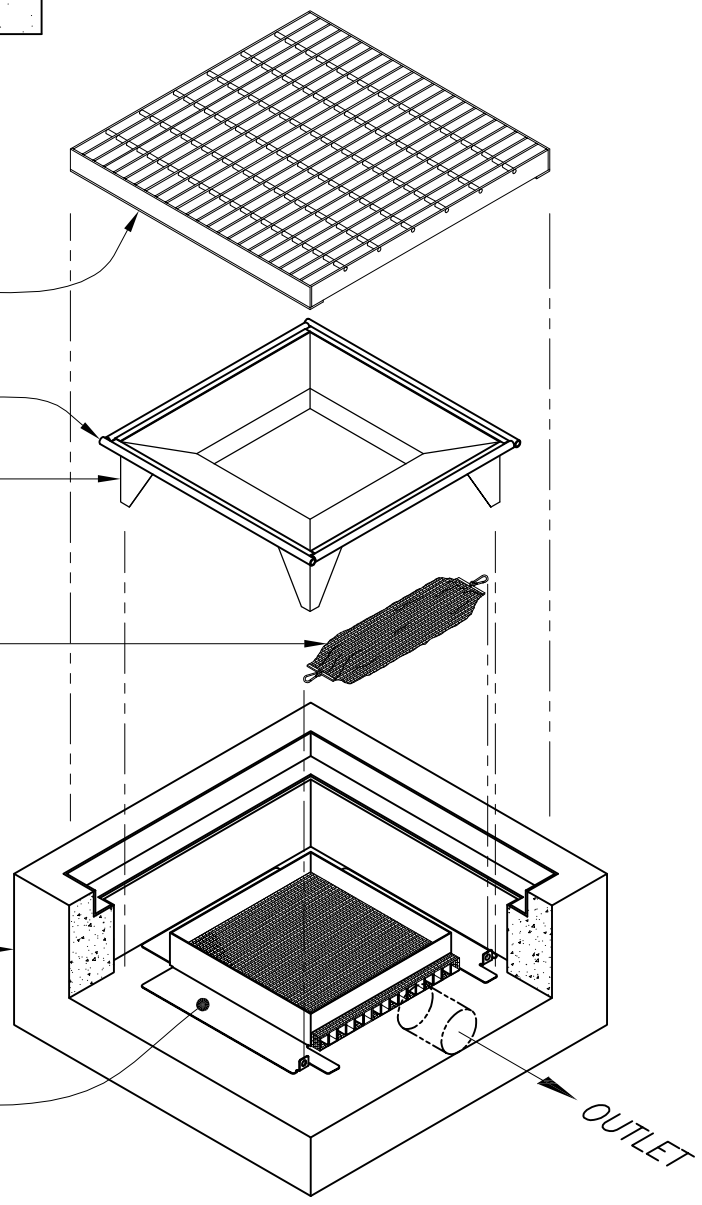
RUBBER GASKET.

INLET FLUME.

"CLIP-IN" FOSSIL ROCK™ ABSORBENT POUCH.

SHALLOW CONCRETE CATCH BASIN.

MATRIX FILTER ELEMENT & BYPASS WEIR FRAME ASSEMBLY.



TITLE

**FloGard® LoPro™**  
SHALLOW CATCH BASIN  
FILTER INSERT



**KriStar Enterprises, Inc.**

360 Sutton Place, Santa Rosa, CA 95407  
Ph: 800.579.8819, Fax: 707.524.8186, www.kristar.com

DRAWING NO. FG-LP-0001	REV C	ECO 0059 JPR 12/30/08	DATE JPR 12/18/06	SHEET 2 OF 2
---------------------------	----------	--------------------------	----------------------	--------------