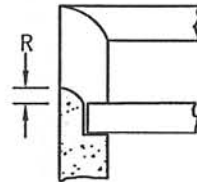
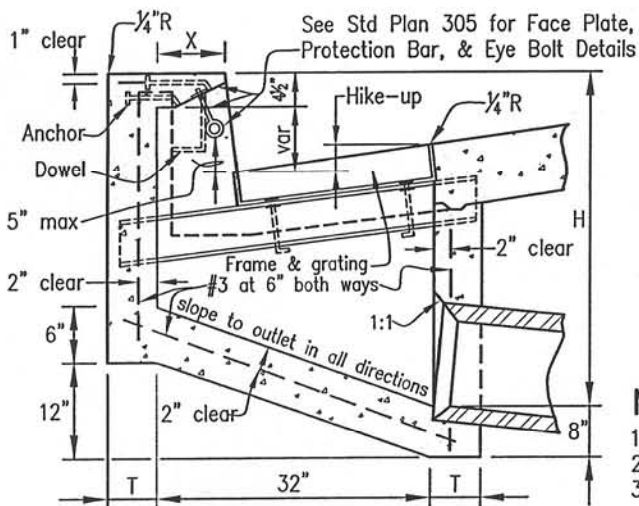


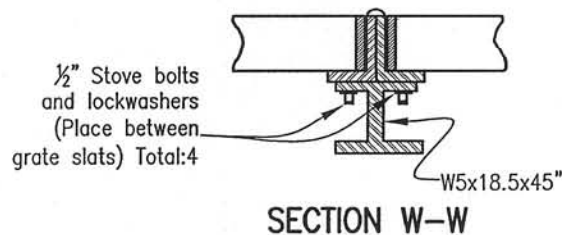
DOWEL DETAIL



END WALL DETAIL



SECTION A-A



SECTION W-W

NOTES:

1. BASIN shall have one grating unless otherwise specified.
2. CURB OPENING shall conform to curb alignment.
3. CURVATURE of the end walls at the curb opening shall be formed by curved forms and shall not be made by plastering.
4. DIMENSIONS
 HIKE-UP shall be in same plane as local depression.
 $R = \frac{1}{2}$ " for lower end wall of a single basin, or the lowest basin of series of spread basins.
 $R = 0$ for all other end wall
 $X = 8$ " for L.D. per Std 307
 $X = 8\frac{1}{2}$ " for L.D. per Std 308
 $T = 6$ " for $H = 8'$ or less
 $T = 8$ " for $H = 8'-1"$ to $20'$
 $H = 3'-6"$ unless otherwise specified
 $L = 2'-10\frac{1}{8}"$ for one grating. Add $3'-4\frac{1}{8}"$ for each additional grating. (See Note 4, Std Plan 305 when $L > 7'$.)
5. EXPOSED SURFACES of the catch basin shall conform in slope, grade, color, finish, and scoring to existing improvements adjacent to the basin. The top shall be finish to conform to standard sidewalk slope and finish where no sidewalks exist.
6. OUTLET PIPE shall be trimmed to the shape and length before concrete is placed.
7. SLOPE of floor parallel with curb shall be 12:1 unless otherwise specified. Slope floor from all directions to the outlet.
8. MISCELLANEOUS: See job plans for lengths. See Std Plan 305 & 306 for Face Plate, Face Plate Anchorage, Miscellaneous Inlet details additional notes, Grate and Frame details, Step details, Pipe Connection details, and Local Depression details.
9. Notch corners to ease removal of grate (typical).

STEEL LIST						
Number of Grating	#4 bars 11" long	Face Plate (See Std. Plan)	Dowels	Anchors	3/4" galvanized steel steps	Reinforcing steel
1	5	3'-10 $\frac{1}{8}$ "	2	2	See Notes	#3
2	12	7'-3 $\frac{3}{4}$ "	2	3		
3	19	10'-8 $\frac{1}{8}$ "	2	4		
						Protection Bar (See Std. Plan)
						3/4" Dia.



3-25-04
DATE APPROVED

[Signature]
PUBLIC WORKS DIRECTOR/C.E.
[Signature]
ASSISTANT CITY ENGINEER

CITY OF ORANGE PUBLIC WORKS DEPARTMENT

INLET TYPE IV
(G.V.O.V.)

STANDARD
PLAN No.
304