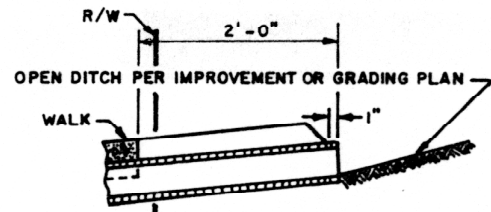


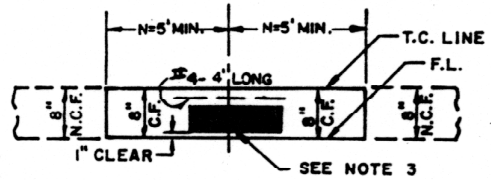
CASE I INLET

DROP INLET CATCH BASIN SECTION



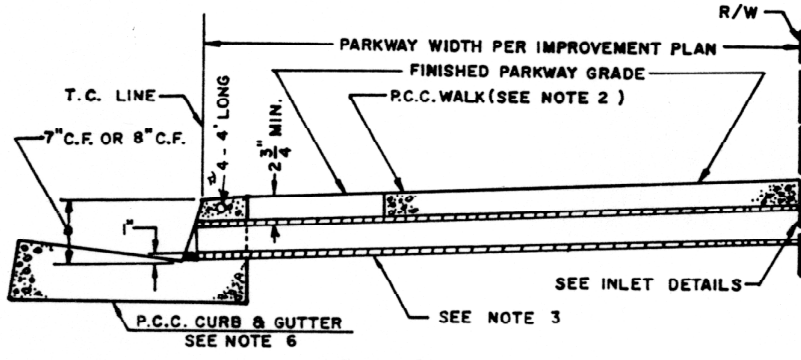
CASE II INLET

GRADED DITCH SECTION

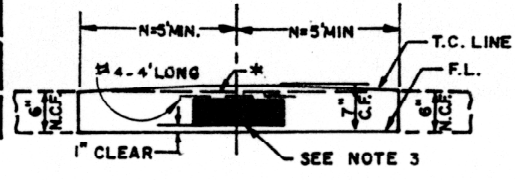


CURB PROFILE

8" NORMAL CURB FACE



SECTION A-A



CURB PROFILE

6" NORMAL CURB FACE

* NORMAL T.C. GRADE LINE AS SHOWN ON PROFILE

NOTE:

1. TOP OF INLET STRUCTURE(CASE I) TO BE FLUSH WITH ADJACENT SURFACE.
2. CONSTRUCT P.C.C. WALK AND CURB AND GUTTER AS SPECIFIED ON PLAN. MINIMUM REPLACEMENT OF WALK AND CURB AND GUTTER SHALL BE FROM JOINT TO JOINT OR AS DIRECTED BY THE CITY ENGINEER. SEE STD. DWG. NO. 314, THE CONTRACT PRICE PAID FOR P.C.C. WALK ITEM SHALL INCLUDE WALK CONSTRUCTED IN CONJUNCTION WITH PARKWAY CULVERT.
3. ONE CIRCULAR PIPE SHALL BE PLACED AT A LOCATION OTHERWISE, THE PIPE SHALL BE ALHAMBRA FOUNDRY A470 OR EQUAL WITH THE SIZE AS SPECIFIED ON PLAN, FOR SIZES OTHER THAN 3" X 5, 9, 12" N SHALL BE 10" AND C.F. OVER PIPE SHALL BE INCREASED 1" FOR 1".
4. INLET CASE TO BE SPECIFIED ON IMPROVEMENT OR GRADING PLAN.
5. ANGLE "O" EQUALS 0° UNLESS OTHERWISE SPECIFIED.
6. TYPE, DIMENSIONS, AND ELEVATIONS OF P.C.C. CURB AND GUTTER PER IMPROVEMENT PLAN.
7. UNLESS OTHERWISE SPECIFIED, FRAME AND GRATE FOR INLET CASE I SHALL BE ALHAMBRA FOUNDRY 14" X 24" TYPE A-2422 (GALVANIZED) OR EQUAL, PLACED LEVEL.
8. CONCRETE SHALL BE CLASS 520C 2500.

CITY OF COSTA MESA
CALIFORNIA
 PUBLIC SERVICES DEPARTMENT

PARKWAY DRAIN NO.2

DRAWN E.K.S.
 SCALE NONE

APPROVED *BDM* Mattern DATE 12/13/05
 BRUCE D. MATTERN R.C.E.19388

STD. DWG. NO.
418

REV.