



LBIW Inc.

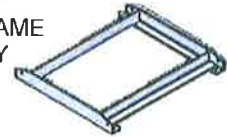
2020 WEST 14TH STREET
LONG BEACH, CA. 90813
Tel No. : (562) 432 5451
Fax No. : (562) 435 5929

www.lbiw.com

PRODUCT NUMBER

LB 319

STEEL FRAME
ASSEMBLY



LOAD RATING

SPECIFICATIONS

MATERIAL : ASTM A36
COATING : ASTM A123
(GALVANIZING)
: MILL FINISH
(UNCOATED)

MADE IN USA

EST. WEIGHT

± 120 LBS

STANDARD PLAN REFERENCE

*APWA 311-4
*APWA 301-4 TO 304-4

DRAWN

EB

REVISED

DATE

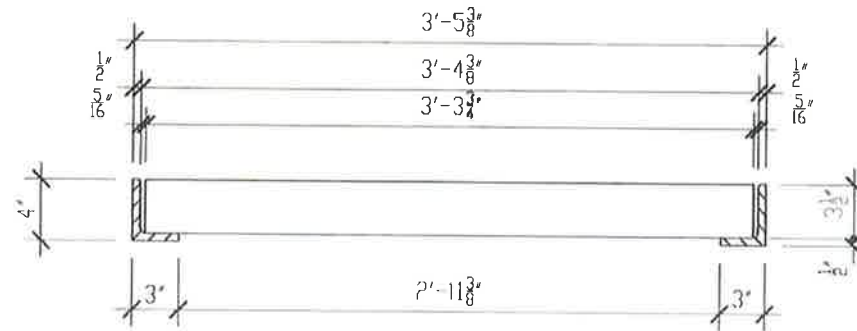
02-08-23

DATE

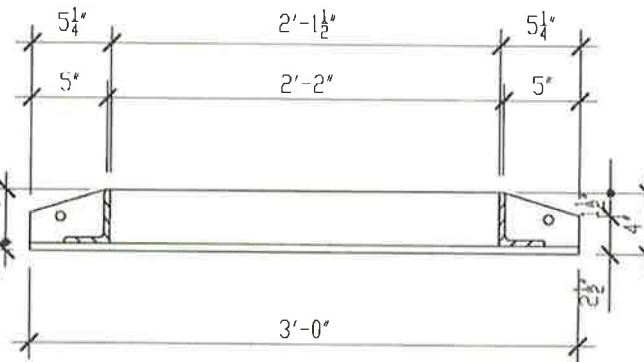
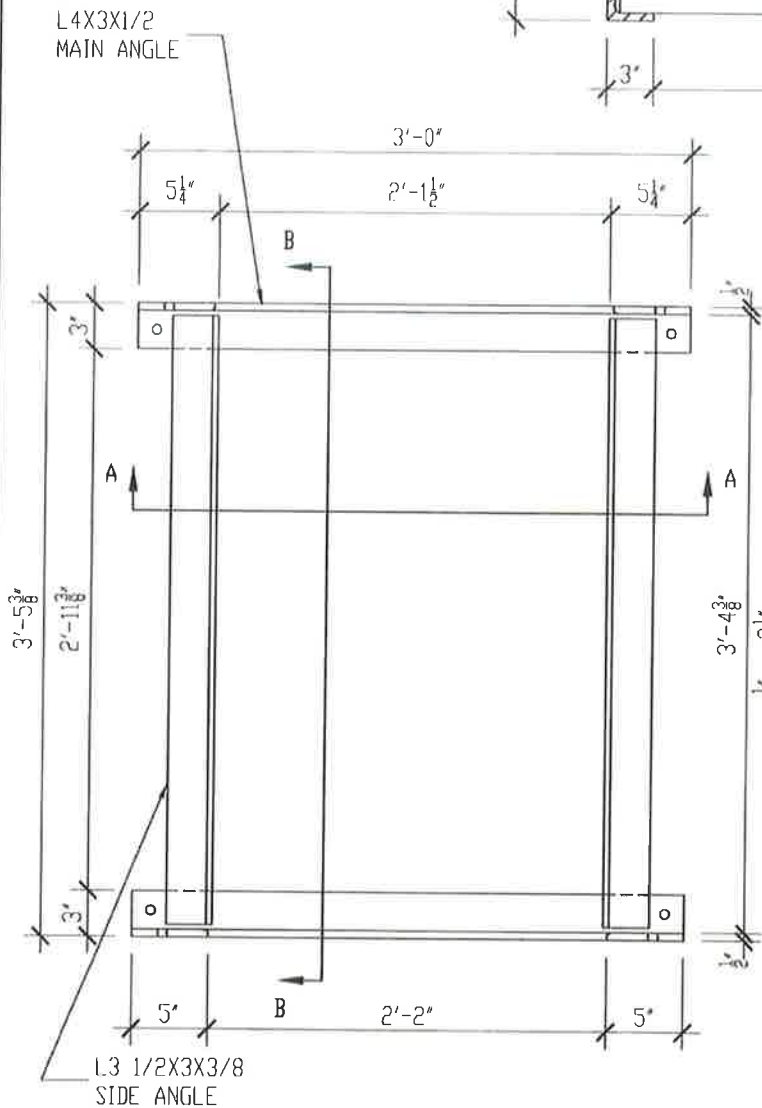
REFERENCE INFORMATION

LBIW CATALOG
SECTION 07

REVISED 2016 EB

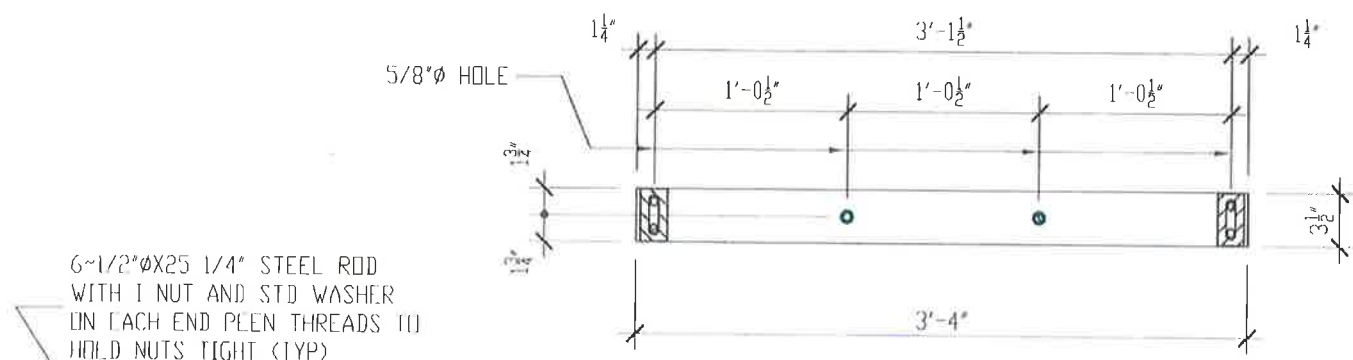


SECTION B-B

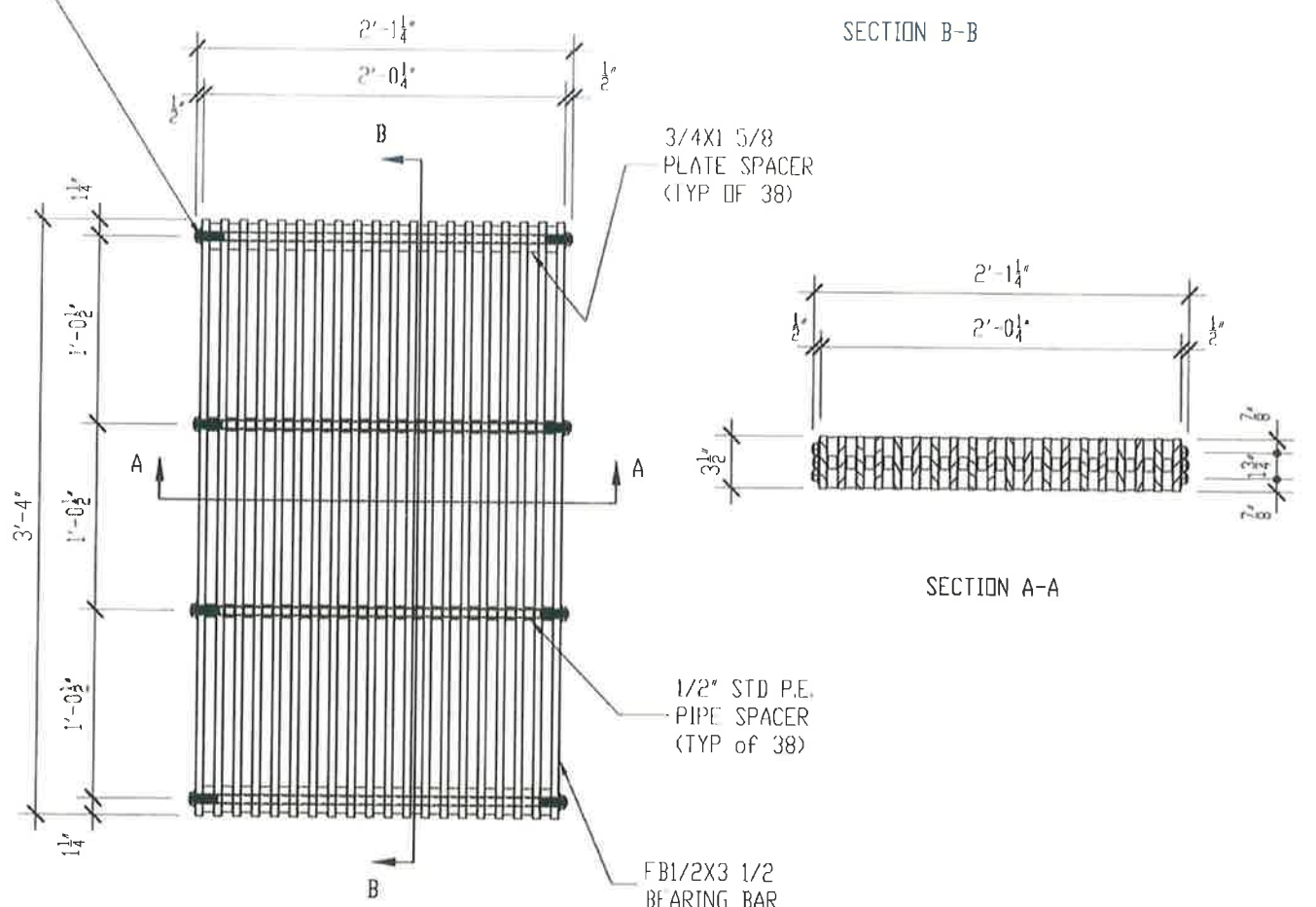


SECTION A-A

LB 319 STEEL FRAME ASSEMBLY



SECTION B-B



SECTION A-A

6-1/2"ØX25 1/4" STEEL ROD WITH 1 NUT AND STD WASHER ON EACH END BEEN THREADS TO HOLD NUTS TIGHT (TYP)

3/4X1 5/8 PLATE SPACER (TYP OF 38)

1/2" STD P.E. PIPE SPACER (TYP OF 38)

FB1/2X3 1/2 BEARING BAR

LB 319 RECTANGULAR GRATE ASSEMBLY



LBIW Inc.
 2020 WEST 14TH STREET
 LONG BEACH, CA. 90813
 Tel No : (562) 432 5451
 Fax No : (562) 435 5929
 www.lbiw.com

PRODUCT NUMBER
LB 319
 STEEL GRATE ASSEMBLY



LOAD RATING
 TRAFFIC RATED

SPECIFICATIONS
MATERIAL : ASTM A36
COATING : ASTM A123 (GALVANIZING)
 : MILL FINISH (UNCOATED)

MADE IN USA

EST. WEIGHT
 ± 445 LBS

STANDARD PLAN REFERENCE
 *APWA 311-4
 *APWA 301-4 TO 304-4
 *APWA 305-4

DRAWN	DATE
EB	02-08-23
REVISED	DATE

REFERENCE INFORMATION
 LBIW CATALOG SECTION 07
 REVISED 2016 EB