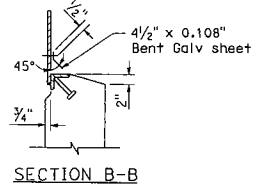
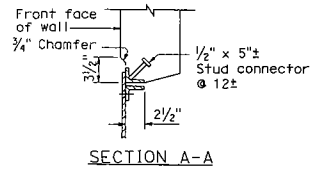
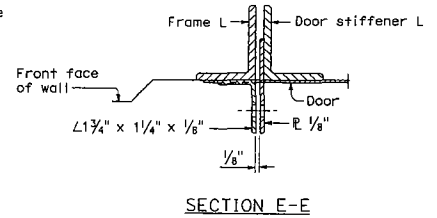
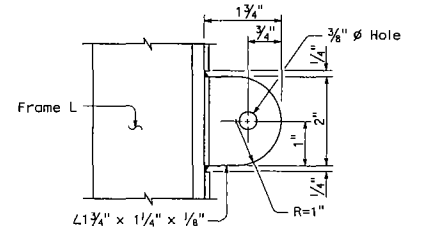
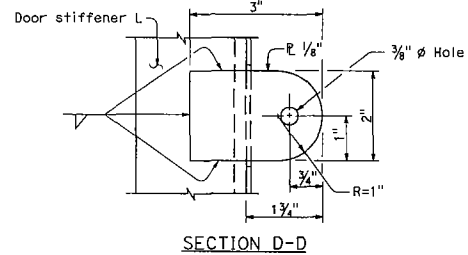
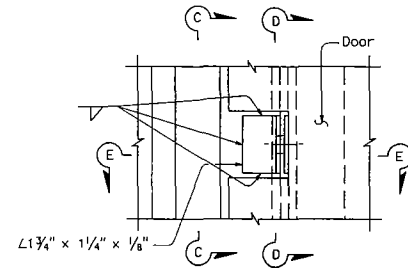


BRIDGE DETAIL 13-3
ACCESS DOOR



- NOTES:**
1. Galvanize frame assemblies and door stiffener angles after welding and fabrication.
 2. Attach door stiffener angles and bent sheet to steel door with blind rivets.



HASP DETAIL

STATE OF CALIFORNIA
DEPARTMENT OF TRANSPORTATION
BRIDGE DETAILS
NO SCALE

DIST.	COUNTY	ROUTE	POST MILES TOTAL PROJECT	SHEET NO.	TOTAL SHEETS

REGISTERED CIVIL ENGINEER

REGISTERED PROFESSIONAL ENGINEER

Madhusudhan Reddy

No. CS1119

Exp. 9-30-07

Civil

STATE OF CALIFORNIA

PLANS APPROVAL DATE

May 1, 2006

The State of California or its officers or agents shall not be responsible for the accuracy or completeness of electronic copies of this plan sheet.

To get to the Caltrans web site, go to: <http://www.dtd.ca.gov>