

PRELIMINARY FOR BIDDING PURPOSES ONLY



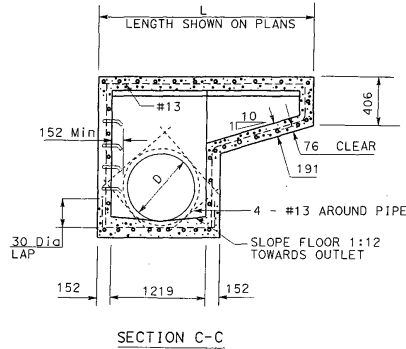
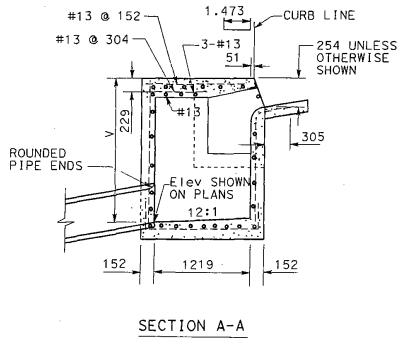
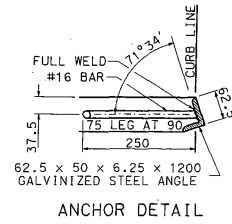
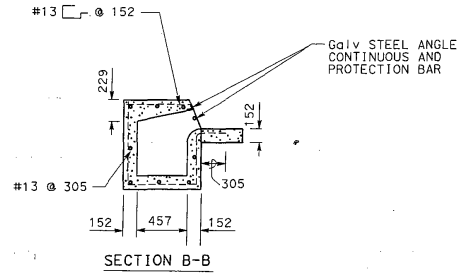
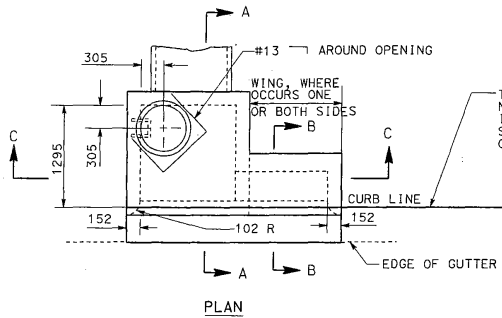
DIST	COUNTY	ROUTE	KILOMETER POST TOTAL PROJECT	SHEET NO	TOTAL SHEETS
11	SD	905	R13.9/R18.6	410	895

REGISTERED CIVIL ENGINEER
 9-17-07
 PLANS APPROVAL DATE

REGISTERED PROFESSIONAL ENGINEER
 W. R. LOPEZ
 No. C58085
 Exp. 6-30-08
 CIVIL
 STATE OF CALIFORNIA

The State of California or its officers or agents shall not be responsible for the accuracy or completeness of electronic copies of this plan sheet.

Go to the Caltrans web site, go to: <http://www.dot.ca.gov>



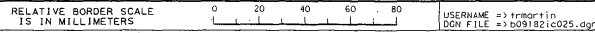
CURB INLET - TYPE B

NOTES:

- FACE ANGLE SHALL BE CAST INTO STRUCTURE CONTINUOUS FOR THE FULL LENGTH "L".
- ALL EXPOSED METAL PARTS TO BE HOT-DIPPED GALVANIZED AFTER FABRICATION.
- WHEN CURB INLET OPENING HEIGHT (H) EXCEEDS 152 mm INSTALL 25 mm STEEL PROTECTION BAR.
- INSTALL ADDITIONAL BARS AT 89 mm CLEAR SPACING ABOVE FIRST BAR WHEN OPENING EXCEEDS 330 mm.
- WHEN CURB INLET OPENING LENGTH EXCEEDS 2438 mm INSTALL 25 mm STEEL SUPPORT BOLTS, SPACED AT NOT MORE THAN 1524 mm O.C.
- TYPE CALLOUTS ON THE 'DRAINAGE PROFILE' SHEETS AND THE 'DRAINAGE QUANTITIES' SHEETS ARE DESIGNATED AS FOLLOWS: B-L, WHERE B IS THE INLET TYPE AND L IS THE LENGTH SHOWN HEREON IN SECTION C-C.
- EXPOSED EDGES OF CONCRETE SHALL BE ROUNDED WITH A RADIUS OF 13 mm.
- WHEN V EXCEEDS 1219 mm STEPS SHALL BE INSTALLED.
- CONCRETE GUTTER TO MATCH ADJACENT GUTTERS.
- AN EXPANSION JOINT SHALL BE PLACED AT THE ENDS OF THE INLET WHERE THE CURB IS TO ADJOIN.
- PROVIDE 6 mm TOOLED GROOVE IN TOP SLAB IN LINE WITH BACK OF ADJACENT CURB.
- SURFACE OF TOP SLAB SHALL BE SIDEWALK FINISHED TO DRAIN TOWARD STREET AT A SLOPE OF 6 mm PER FOOT.
- MAINTAIN 38 mm CLEAR SPACING BETWEEN REINFORCING AND SURFACE UNLESS OTHERWISE NOTED.
- REFER TO SHEET DD-19 FOR ADDITIONAL DETAILS.

DRAINAGE DETAILS
NO SCALE DD-25

NOTE: ALL DIMENSIONS ARE IN MILLIMETERS UNLESS OTHERWISE SHOWN.



CU 11224

EA 091821

STATE OF CALIFORNIA - DEPARTMENT OF TRANSPORTATION
Caltrans PROJECT DEVELOPMENT
 PROJECT ENGINEER
W. R. LOPEZ
 CALCULATED/DESIGNED BY
 CHECKED BY

STATE OF CALIFORNIA - DEPARTMENT OF TRANSPORTATION
Caltrans PROJECT DEVELOPMENT
 PROJECT ENGINEER
W. R. LOPEZ
 CALCULATED/DESIGNED BY
 CHECKED BY