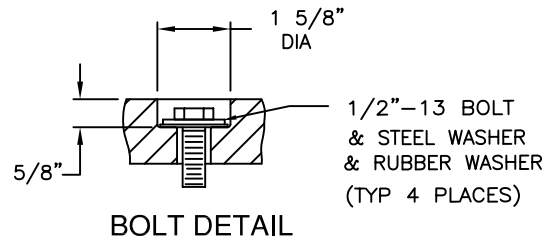
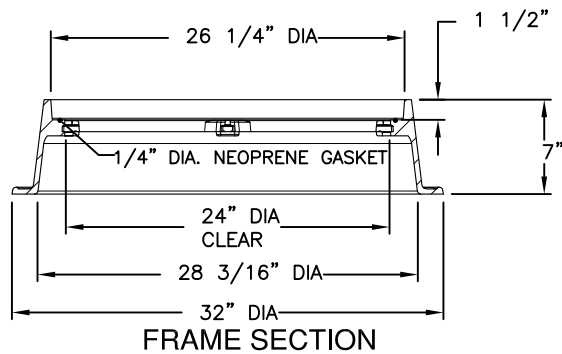
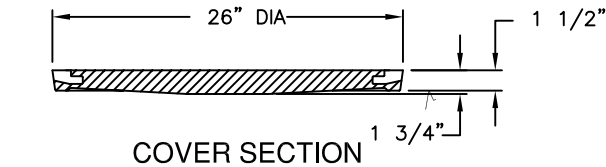
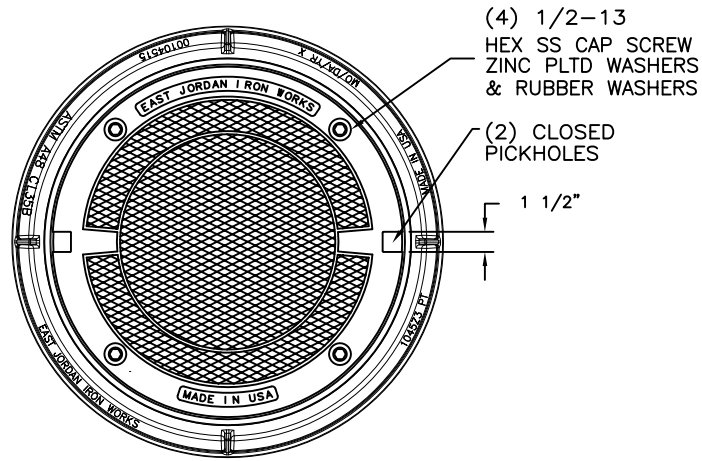


1905APT DI 1045Z3PT ASSEMBLY



PRODUCT NUMBER

00190522W01

DESIGN FEATURES

MATERIALS

COVER-DUCTILE IRON
ASTM A536

FRAME-GRAY IRON
ASTM A48 CL35B

DESIGN LOAD

EXTRA HEAVY DUTY
PROOF LOAD: 200,000

COATING

UNDIPPED

OPEN AREA

N/A

√ DESIGNATES MACHINE SURFACE

REFERENCE INFORMATION

00104515

00190522

DRAWING DETAILS

ORIGINAL DRAWING: DEW 07/14/10

REVISED BY:

Corporate
Headquarters
301 Spring Street
PO Box 439
East Jordan, MI
49727-0439
800.874.4100

Call Today for
More Information

800.626.4653

EJIW EAST JORDAN
IRON WORKS EST. 1883
WE COVER YOUR INFRASTRUCTURE

www.ejiw.com
MADE IN THE USA

•Weights (lbs./kg.) dimensions (inches/mm.), and drawings

CONFIDENTIAL: This drawing is the property of East Jordan Iron works, Inc., and embodies confidential information, registered marks, trade secret information, and/or know how that