

PRODUCT NUMBER

**00543606**

CATALOG NUMBER

**5436-3**

**BOLTED AIRPORT  
FRAME & GRATE  
ASSEMBLY**

LOAD RATING  
EXTRA HEAVY DUTY  
(PROOF LOAD TESTED  
TO 200,000 LBS.)

COATING  
**DIPPED**

ESTIMATED WEIGHT  
EA. SIDE FRAME: 24 LBS  
EA. END FRAME: 34 LBS  
EA. GRATE: 400 LBS  
UNIT: 1412 LBS

MATERIAL SPECIFICATION  
GRATE - DUCTILE IRON  
ASTM A536  
FRAME - GRAY IRON  
ASTM A48 CL35B

OPEN AREA  
1155 SQ. IN.

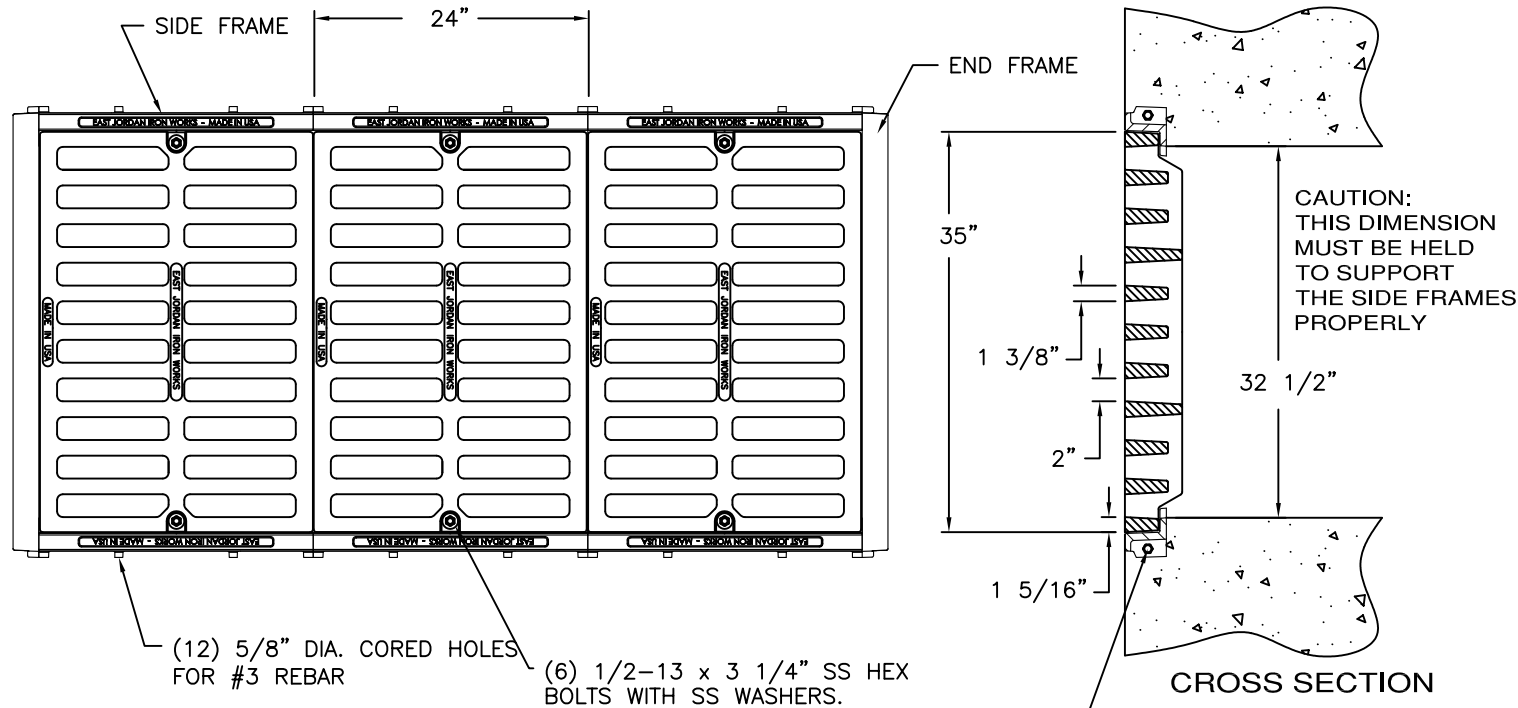
√ DESIGNATES MACHINED  
SURFACE

|              |                  |
|--------------|------------------|
| DRAWN<br>SBB | DATE<br>03/22/07 |
|--------------|------------------|

|                     |                  |
|---------------------|------------------|
| LAST REVISED<br>SBB | DATE<br>09/01/09 |
|---------------------|------------------|

REFERENCE INFORMATION

00543612 00543614  
00543632



(12) 5/8" DIA. CORED HOLES  
FOR #3 REBAR

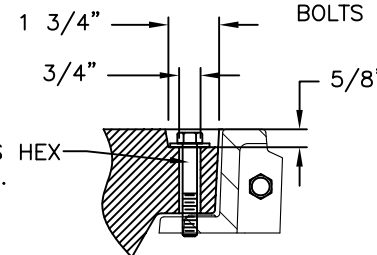
(6) 1/2-13 x 3 1/4" SS HEX  
BOLTS WITH SS WASHERS.

CAUTION:  
THIS DIMENSION  
MUST BE HELD  
TO SUPPORT  
THE SIDE FRAMES  
PROPERLY

CROSS SECTION

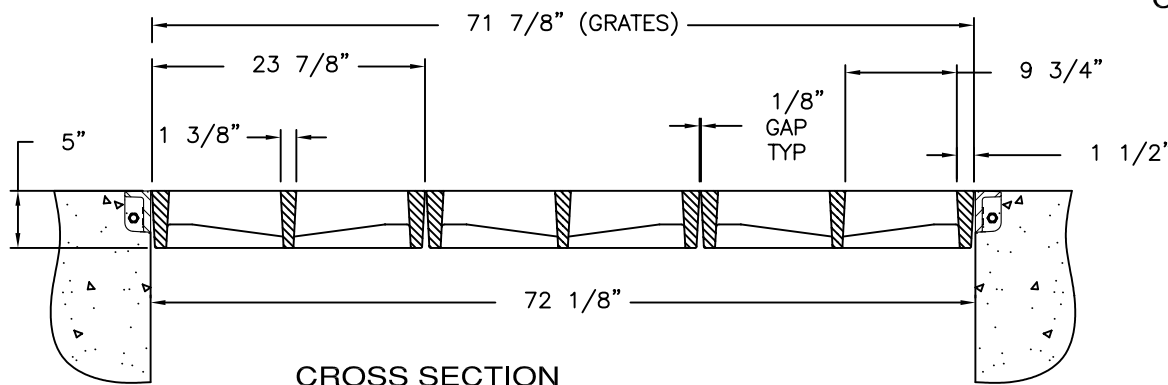
(8) 1/2"-13 x 2 3/4" SS HEX  
BOLTS W/ SS WASHERS & NUTS

**CAUTION:  
DO NOT  
DISASSEMBLE  
BOLTED GRATES  
BEFORE SETTING  
SECTIONS IN  
CONCRETE.**



1/2"-13 x 3 1/4" SS HEX  
BOLT WITH SS WASHER.

COUNTERBORE DETAIL



CROSS SECTION