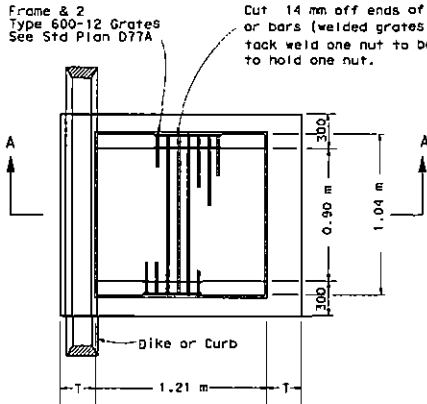
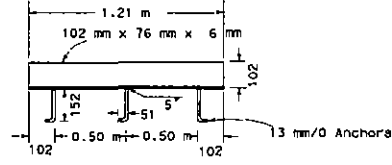


STATE OF CALIFORNIA - DEPARTMENT OF TRANSPORTATION  
**Caltrans**  
 PROJECT ENGINEER  
**PHI DINH**  
 HYDRAULICS

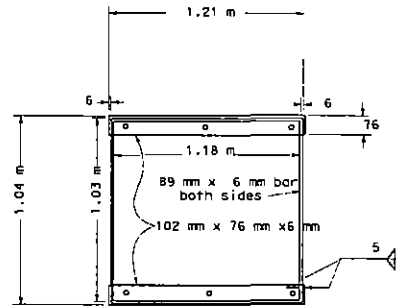
DATE REVISION BY  
 DATE REVISION BY  
 CALCULATED/DESTROYED BY  
 CHECKED BY



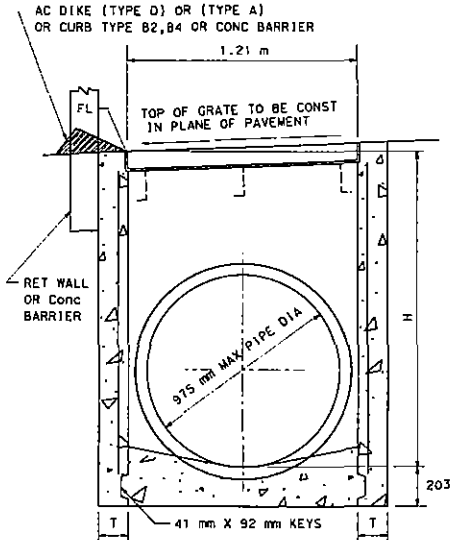
**PLAN**



**ANCHOR PLACEMENT DETAIL**



**GRATE FRAME DETAIL**



**SECTION A - A**  
 (FOR PIPE DIAMETERS LESS THAN 975 mm)  
**GD-1 INLET**



DIST	COUNTY	ROUTE	ALLOTTED	PLM	POST	SHEET	TOTAL
12	Ora	90	19.0	20.90	71	396	
			02-09-06				
			PHI DINH				
			REGISTERED CIVIL ENGINEER				
			2-27-06				
			PHI DINH				
			No. CB1179				
			Exp. 8-30-07				
			CIVIL				
			STATE OF CALIFORNIA				

To get to the Caltrans web site go to <http://www.dot.ca.gov>

**GENERAL NOTES**

- "H" is the difference in elevation between the outlet pipe flow and the flow line of the grates.
- Steps - None required when "H" is 1.07 m or less. Install one step 406 mm+ above floor when "H" is more than 1.07 m and less than 1.52 m. Where "H" is more than 1.52 m steps shall be evenly placed @ 305 mm+ intervals from 152 mm+ above floor to within 305 mm+ of the top of the box. Place steps in wall without pipe openings. See Standard Plan D-74C for step detail.
- Pipe(s) can be placed in any wall.
- Reinforcing steel not required in walls when H=1.83 m or less.
- Reinforcing steel in walls shall be 413 bars @ 457 mm+ centers placed 38 mm clear to side of box.
- When concrete curb is used the curb shall be monolithically constructed with the inlet.

**MISCELLANEOUS IRON & STEEL**

INLET TYPE	GRATE TYPE	WEIGHT (Kg)
GD-1	600-12	288
GD-1	600-12X	215

H	T
2.50 m or less	150 mm
2.51 m to 6.0 m	200 mm

ALL DIMENSIONS ARE IN MILLIMETERS UNLESS OTHERWISE SHOWN  
**DRAINAGE DETAILS**  
 NO SCALE

**DD-1**

150111001.dgn 10/20/06 10:05:20 AM