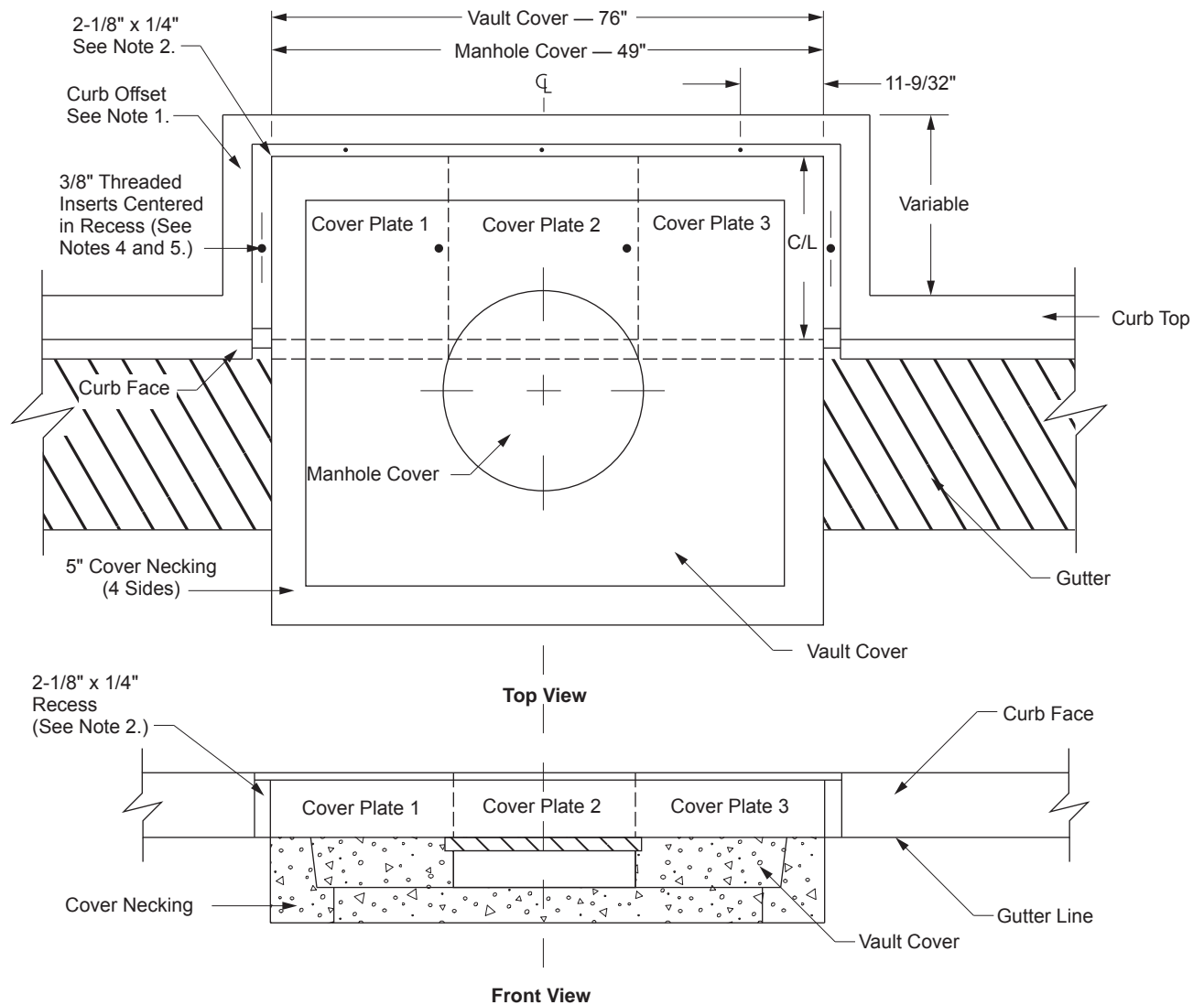


MC 870 Removable Curb for 4' x 5' Vault Covers and Manhole Covers

Scope MC 870.1 Removable Curb for 4' x 5' Vault Covers and Manhole Covers

Figure MC 870-1: Removable Curb for 4' x 5' Vault Covers and Manhole Covers



Note(s):

1. The three-sided offset curbing around the vault necking, or manhole necking, shall be constructed to the dimensions of the existing or proposed curbing.
2. A 2-1/8" wide by 1/4" deep recess shall be placed on top of the offset curb, and curb face, as shown on the drawing.
3. Three plate covers are required for 4' x 5' vault covers. Manhole covers require two plate covers (plate #1 and 3).
4. Threaded 3/8" inserts shall be placed in the 2-1/8" wide curb recesses, to the dimensions shown on the "Top View" drawing. A minimum of five inserts are required for the 4' x 5' vault cover, four for a manhole cover.
5. Whenever the plate depth exceeds 36", an additional insert, equally spaced, shall be placed into the recess of the offset curbing sides.
6. For steel cover plate details, see [Scope MC 870.2 \(Sheet 2\)](#).

Approved by:

B. C.

Removable Curb for 4' x 5' Vault Covers and Manhole Covers

MC 870

Sheet 1 of 2

Effective Date:

10-23-2015

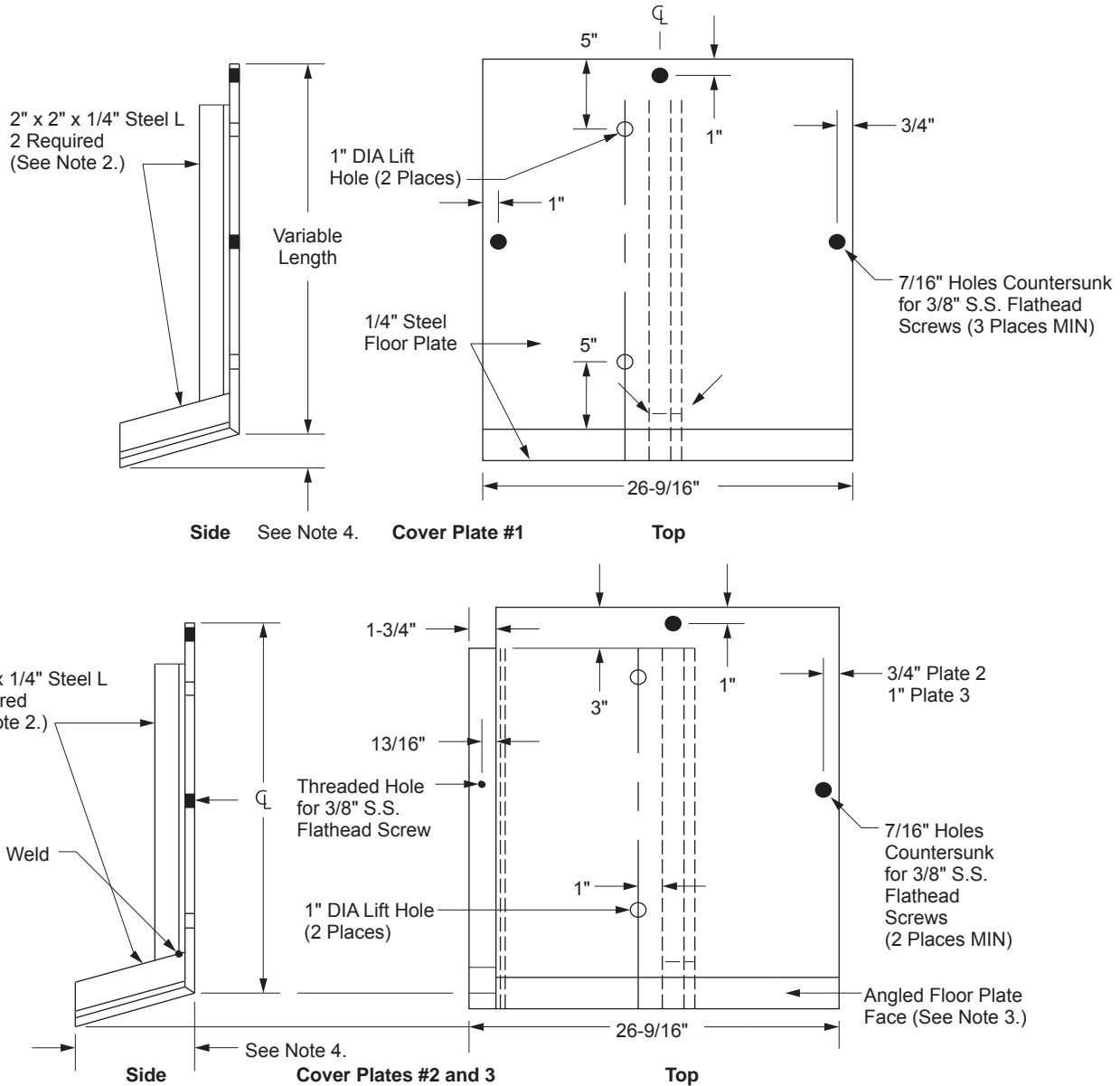
What's Changed?

UGS

► SCE Public ◀

Scope MC 870.2 Removable Curbing (Steel Cover Plates)

Figure MC 870-2: Removable Curbing (Steel Cover Plates)



Note(s):

1. Nonskid 1/4" thick steel floor plates shall be constructed to the dimensions shown. See MC 860 for plate location sequence on curb offset.
2. The 2" x 2" x 1/4" steel L shall be welded to the top and angled floor plate face.
3. Angled floor plate face may be bent or welded in place to the top plate.
4. Angle and depth of floor plate face shall match standard curb.
5. A minimum of seven 3/8" stainless steel flathead screws are required for the 4' x 5' vault cover plates, and a minimum of five screws for the manhole plates.
6. Covers to be hot dip galvanized per ASTM A123 after fabrication.

MC 870

Removable Curb for 4' x 5' Vault Covers and Manhole Covers

Approved by:

B. C.

Sheet 2 of 2

What's Changed? Note 6 was updated for clarity.

Effective Date:

UGS

10-23-2015