

DIST	COUNTY	ROUTE	POST MILES TOTAL PROJECT	SHEET NO.	TOTAL SHEETS

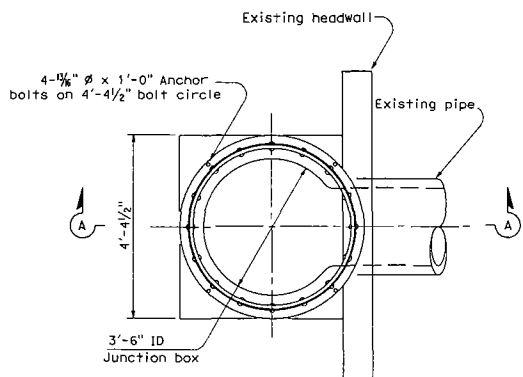
REGISTERED CIVIL ENGINEER
 Glenn DeCou
 No. C34547
 Exp. 9-30-07
 CIVIL
 STATE OF CALIFORNIA

May 1, 2006
 PLANS APPROVAL DATE

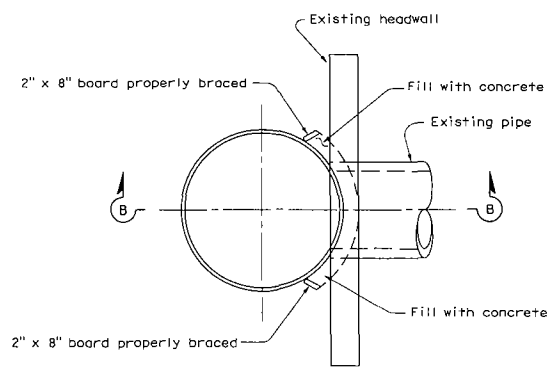
The State of California or its officers or agents shall not be responsible for the accuracy or completeness or electronic copies of this plan sheet.

To get to the Caltrans web site, go to: <http://www.dot.ca.gov>

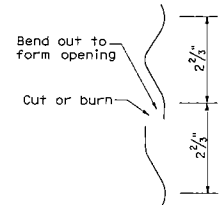
2006 STANDARD PLAN D93C



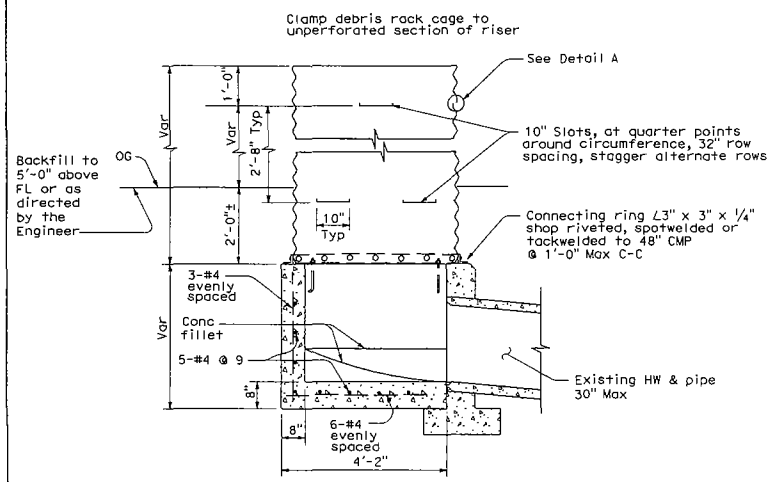
PLAN



PLAN



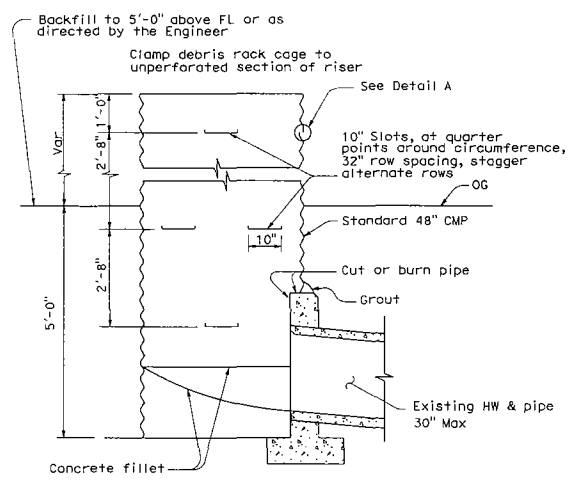
DETAIL A



SECTION A-A

CMP RISER AND JUNCTION BOX

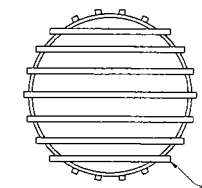
TYPE A



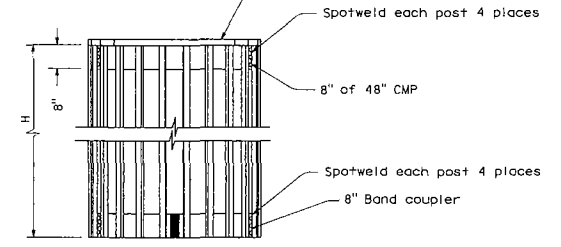
SECTION B-B

CMP RISER

TYPE B



TOP VIEW



FRONT VIEW

H = 22 Posts - 6'-0" or 8'-0" lengths use 2" pipe or L2" x 2" x $\frac{1}{8}$ " (Galvanized steel or aluminum)

DEBRIS RACK CAGE

STATE OF CALIFORNIA
 DEPARTMENT OF TRANSPORTATION
**PIPE RISER WITH
 DEBRIS RACK CAGE**

NO SCALE

D93C

180