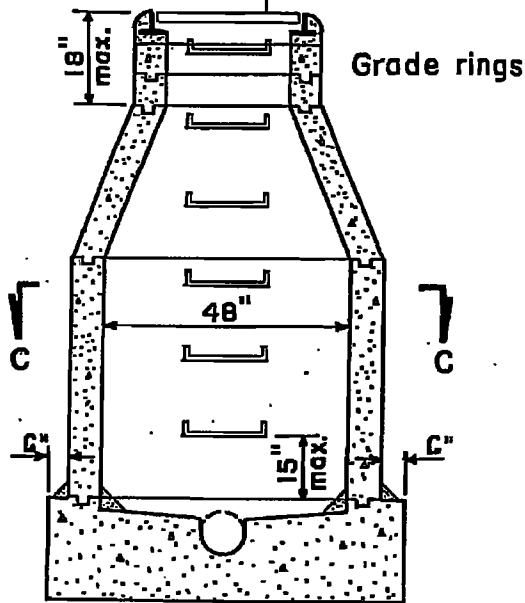
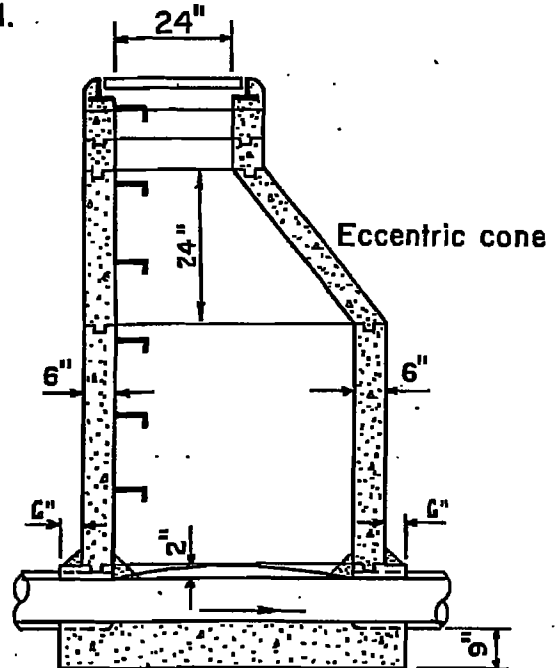


Alhambra Fdry. A-1270  
frame and cover per Std.  
Dwg. N<sup>o</sup> S-105

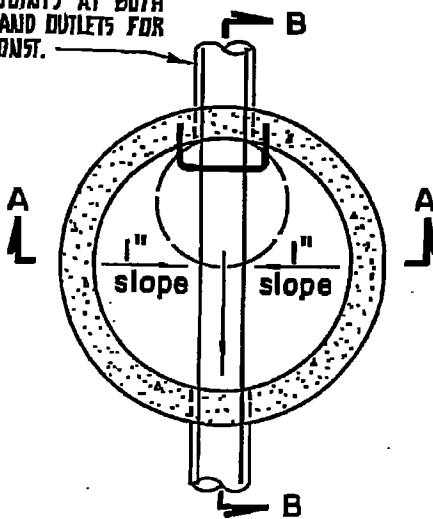


**SECTION A-A**



**SECTION B-B**

2 - 2' JOINTS AT BOTH  
INLETS AND OUTLETS FOR  
V.C.P. CONST.



**SECTION C-C**

**NOTES:**

1. Manholes shall be precast concrete as manufactured by Associated Concrete Products, Inc., or approved equal.
2. Concrete base and stub walls shall be poured in one operation to an elevation 2" above top of pipe.
3. Concrete shall be Class 560-C-3250.
4. Depth of the channel shall equal pipe diameter for all sizes of pipe.
5. The floor of manholes shall be steel troweled.
6. Steps shall be polypropylene w/a 1/2" diameter steel core meeting ASTM A - B2, ASTM C-478, ASTM type II grade 4375B, 16" O.C.
7. Manhole bases must be poured against undisturbed soil.
8. Steps for manhole shall be placed upstream.
9. Mortar for joints shall be per Costa Mesa Sanitary District Std. Dwg. No. S-103. REVISED 1/21/80

**COSTA MESA SANITARY DISTRICT**

**Standard 48" I.D. Manhole**

Date: 6-18-82

Approved:

*H. B. Howe*

District Engineer - R.C.E. 31720

Drawing N<sup>o</sup>: S - 100