

V5848 TF FRAME V5648 DI GRATE ASSEMBLY

PRODUCT NUMBER

45648033B01

DESIGN FEATURES

MATERIALS

GRATES-DUCTILE IRON
ASTM A536

FRAMES-GRAY IRON
ASTM A48 CL35B

DESIGN LOAD

EXTRA HEAVY DUTY
(PROOF LOAD TESTED
TO 200,000 LBS.)

COATING

DIPPED

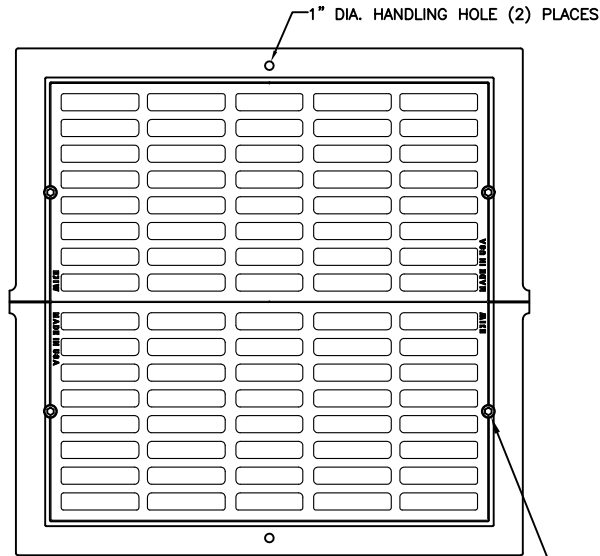
OPEN AREA

1374 SQ IN

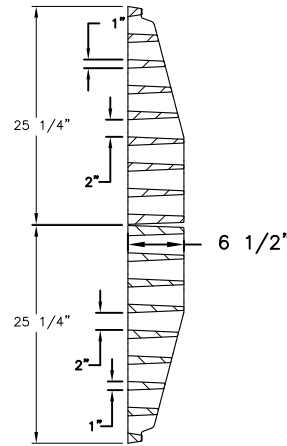
√ DESIGNATES MACHINED SURFACE

WEIGHT

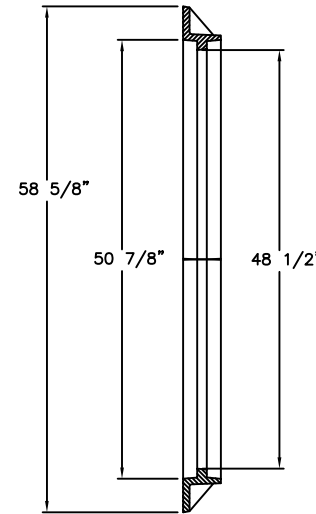
FRAME - 383 LBS
GRATE - 470 LBS EACH
UNIT - 1323 LBS



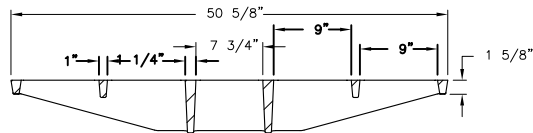
FRAME AND GRATE TOP VIEW



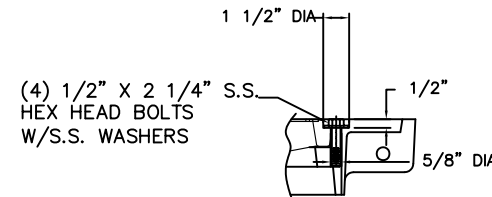
GRATE SECTION



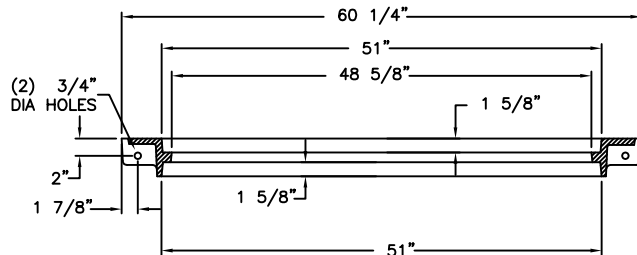
FRAME SECTION



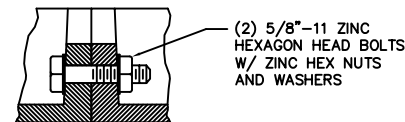
GRATE SECTION



CRACK DRILL DETAIL



FRAME SECTION



TWO PIECE FRAME BOLTDOWN DETAIL

NOTE: FRAME IS REVERSIBLE.
FOR BOTTOM FLANGE ORDER No. V-5648.
FOR TOP FLANGE ORDER No. V-5848.

REFERENCE INFORMATION

(2) 45648011
(2) 45648033

DRAWING DETAILS

ORIGINAL DRAWING: DEF 01/20/11

REVISED BY: SMM 01/28/11

Corporate
Headquarters
301 Spring Street
PO Box 439
East Jordan, MI
49727-0439
800.874.4100



Call Today for
More Information

800.626.4653

EJIW EAST JORDAN
IRON WORKS EST 1883
WE COVER YOUR INFRASTRUCTURE

www.ejiw.com
MADE IN THE USA

- Weights (lbs./kg.), dimensions (inches/mm.), and drawings provided for your guidance.
- We reserve the right to modify specifications without prior notice.
- Uncontrolled distribution.

CONFIDENTIAL: This drawing is the property of East Jordan Iron works, Inc., and embodies confidential information, registered marks, trade secret information, and/or know how that is the property of East Jordan Iron Works, Inc. ©Copyright 2009 East Jordan Iron Works, Inc.