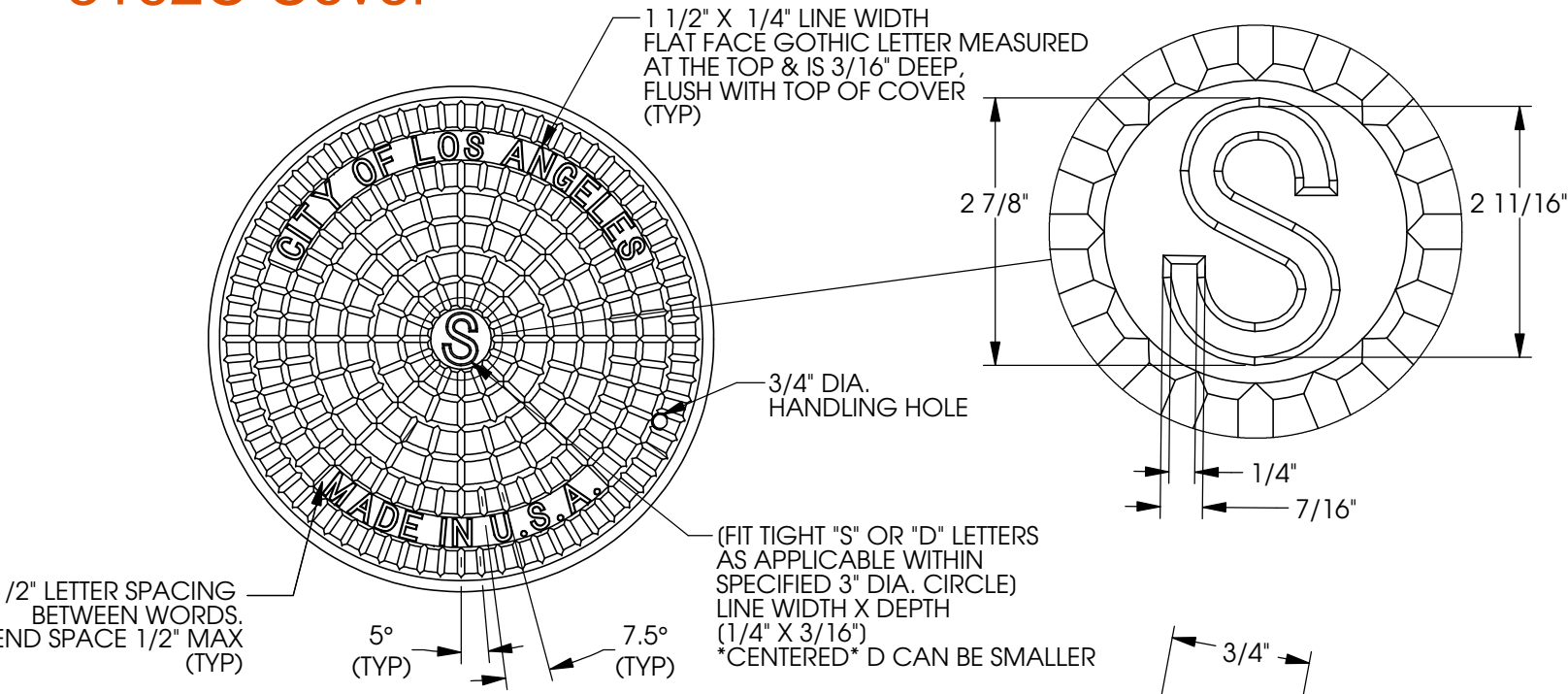


3162C Cover



Product Number
00316285

- Design Features**
- Materials
Gray Iron (CL35B)
 - Design Load
Heavy Duty
Proof Load Tested to 53,200 LBS.
 - Open Area
n/a
 - Coating
Asphaltic Coated
 - √ Designates Machined Surface

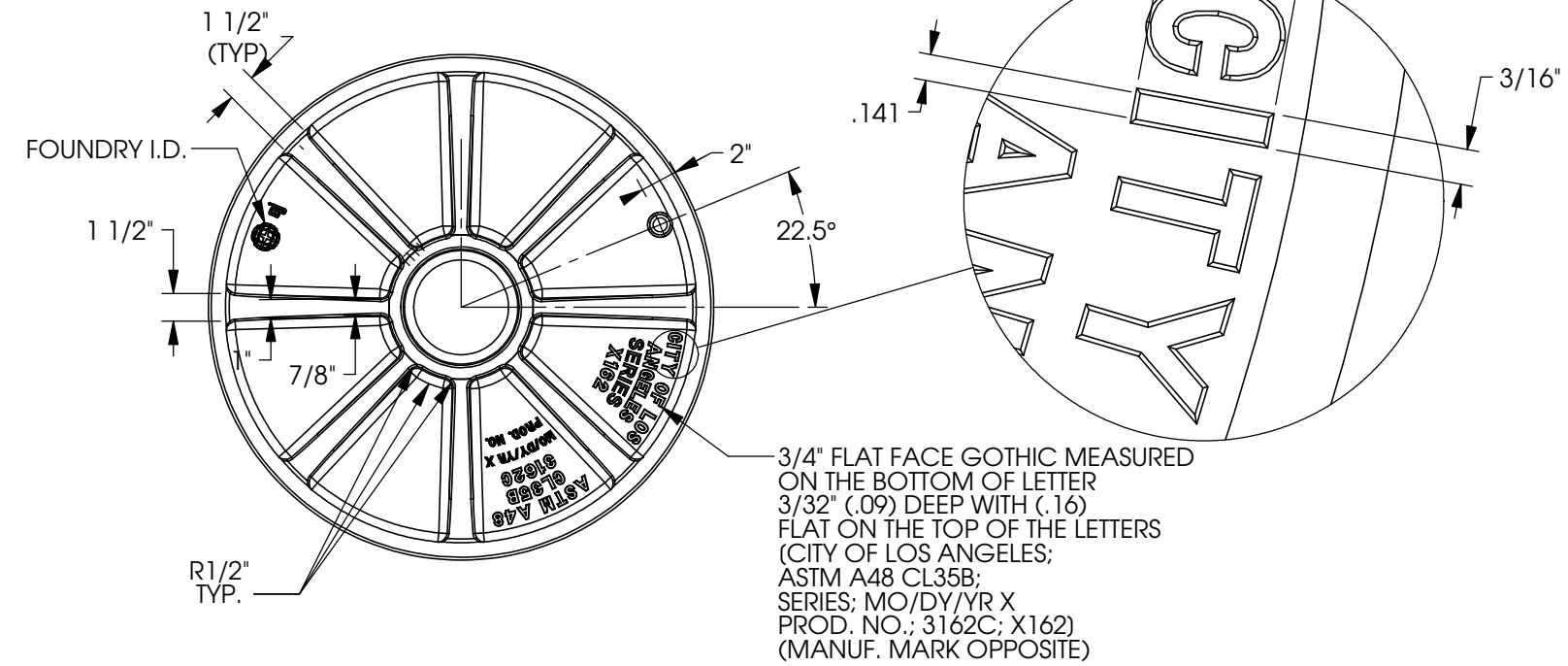
Weight
MIN. 175 LBS.
MAX. 195 LBS.

- Certification**
- ASTM A48
 -
 -
 - Country of Origin: USA

Manufacturing Facility
ARDMORE, OK., USA

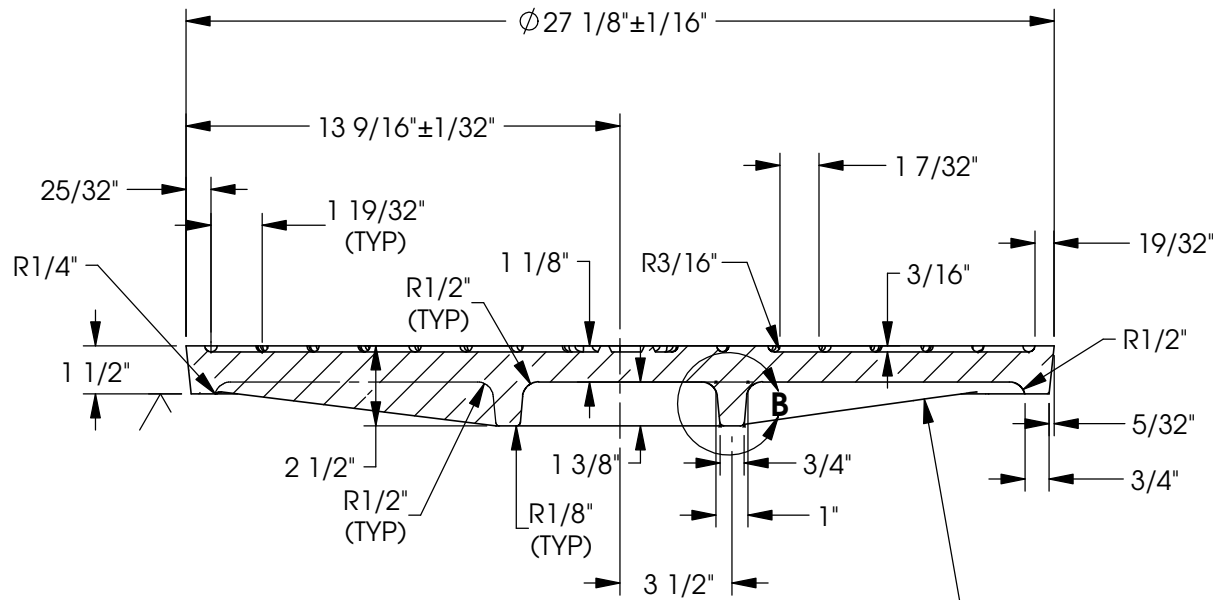
Fabrication Inspection
Required.

Drawing Revision
11/18/2011 Designer: SMM
12/10/2013 Revised By: MAH



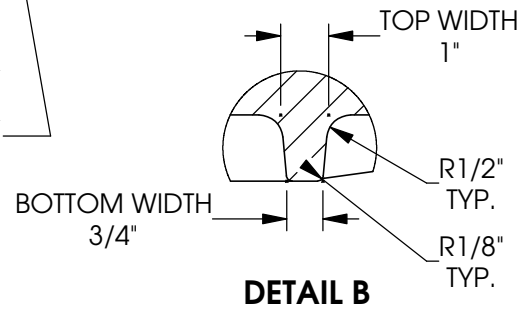
Contact
800 626 4653
ejco.com

3162C Cover

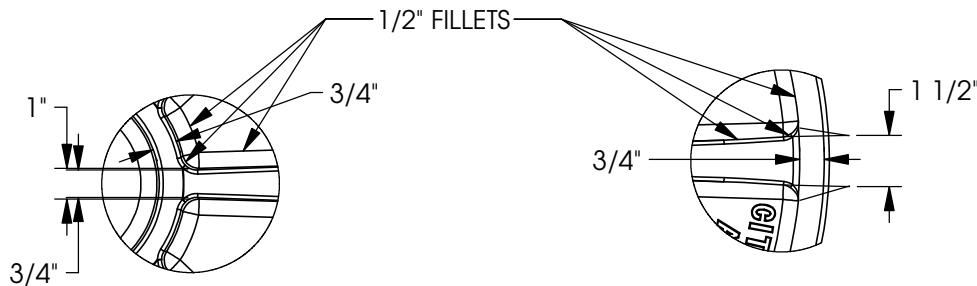


SECTION A-A

NOTE: RIGHT SIDE OF CROSS SECTION A-A IS CUT BETWEEN RIBS SHOWING THE SEAT PROFILE, SEE LEFT SIDE OF SECTION A-A FOR BEGINNING OF CROSS RIB



DETAIL B



RIB VIEW DETAIL

RIB VIEW DETAIL

Product Number

00316285

Design Features

- Materials
Gray Iron (CL35B)
- Design Load
Heavy Duty
Proof Load Tested to 53,200 LBS.
- Open Area
n/a
- Coating
Asphaltic Coated
- √ Designates Machined Surface

Weight

MIN. 175 LBS.
MAX. 195 LBS.

Certification

- ASTM A48
-
- Country of Origin: USA

Manufacturing Facility

ARDMORE, OK., USA

Fabrication Inspection
Required.

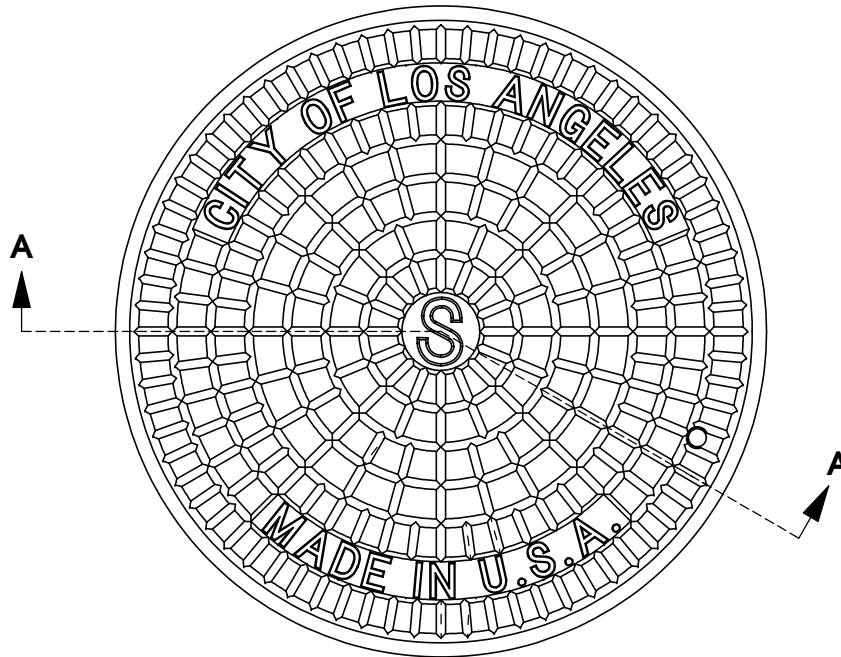
Drawing Revision

11/18/2011 Designer: SMM
12/10/2013 Revised By: MAH

Contact

800 626 4653
ejco.com

3162C Cover



Product Number

00316285

Design Features

- Materials
Gray Iron (CL35B)
- Design Load
Heavy Duty
Proof Load Tested to 53,200 LBS.
- Open Area
n/a
- Coating
Asphaltic Coated
- √ Designates Machined Surface

Weight

MIN. 175 LBS.
MAX. 195 LBS.

Certification

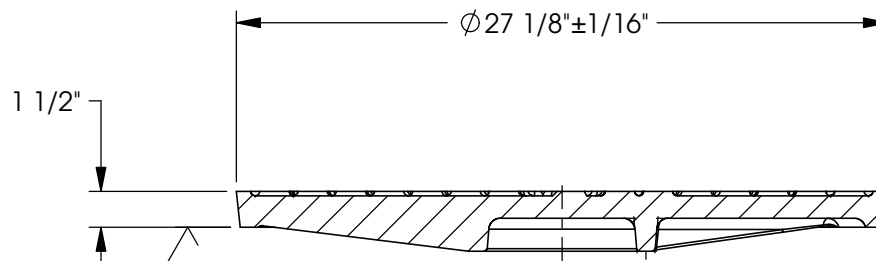
- ASTM A48
-
- Country of Origin: USA

Manufacturing Facility

ARDMORE, OK., USA

Fabrication Inspection
Required.

SEE DETAIL VIEWS FOR ALL DIMENSIONS AND SPEC. INFORMATION



SECTION A-A

Drawing Revision

11/18/2011 Designer: SMM
12/10/2013 Revised By: MAH

Contact

800 626 4653
ejco.com