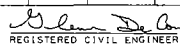
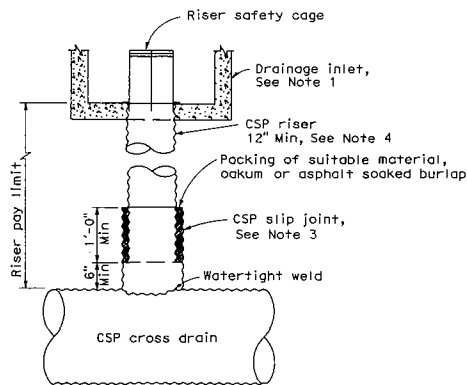


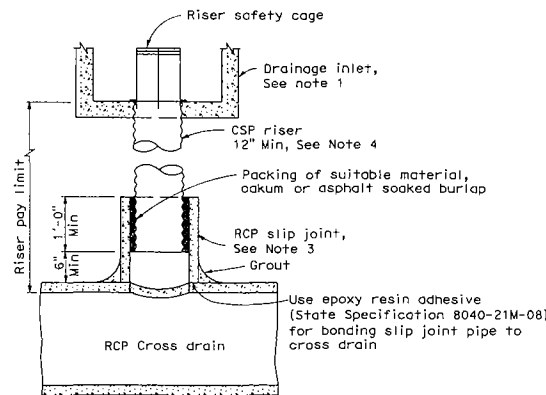
DIST	COUNTY	ROUTE	POST MILES TOTAL PROJECT	SHEET NO.	TOTAL SHEETS
 REGISTERED CIVIL ENGINEER					
May 1, 2006 PLANS APPROVAL DATE					
Glenn DeCoti No. C34547 Exp. 8-30-07 CIVIL STATE OF CALIFORNIA					
<small>The State of California or its officers or agents shall not be responsible for the accuracy or completeness of electronic copies of this plan sheet.</small>					
<small>To get to the Caltrans web site, go to: <a href="http://www.dtd.ca.gov">http://www.dtd.ca.gov</a></small>					

**NOTES:**

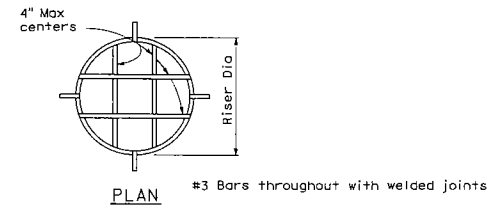
1. Structure at top of riser may be any standard drainage inlet or pipe inlet.
2. Galvanizing: See Standard Specifications or Special Provision.
3. Diameter of slip joint to be 3" greater than diameter of riser.
4. Plastic pipe riser may be substituted for CSP riser shown, slip joint diameter to be as necessary to accommodate plastic pipe outside diameter.
5. For plastic pipe cross drain, use fabricated reducing tee of same material as cross drain as appropriate to provide watertight connection.



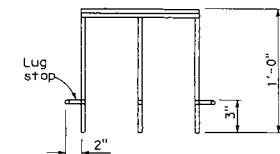
**CSP RISER FOR DRAINAGE INLET**



**RCP RISER FOR DRAINAGE INLET**



**PLAN**



**ELEVATION**

**RISER SAFETY CAGE DETAIL**

STATE OF CALIFORNIA  
DEPARTMENT OF TRANSPORTATION  
**DRAINAGE INLET  
RISER CONNECTIONS**

NO SCALE

**D93B**