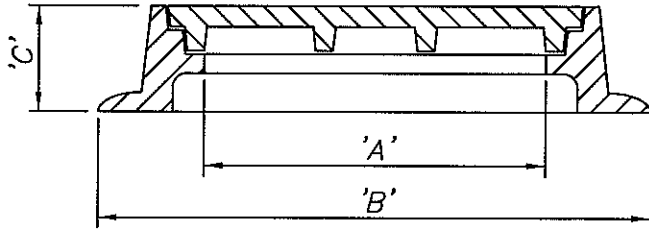


| NO. | 'A' | 'B' | 'C' |
|--------|-------|-------|-------|
| A-1170 | 22.5" | 33.5" | 6" |
| A-1480 | 34.5" | 43.5" | 4.75" |

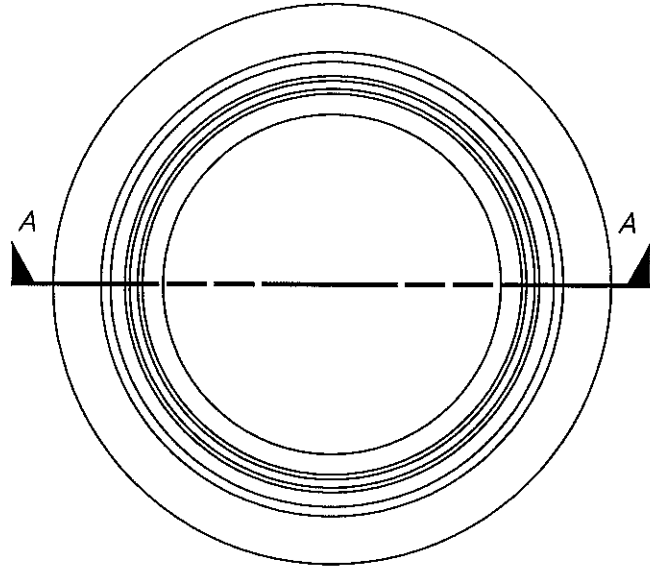


SECTION A-A

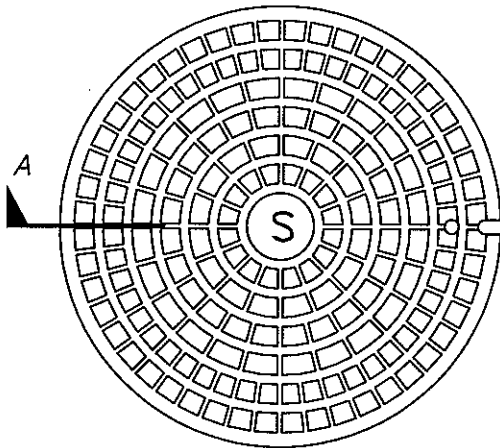
GENERAL NOTES:

1. 24" COVER & FRAME ALHAMBRA NO. A-1170 OR APPROVED EQUAL WEIGHT 470 LBS.
2. 36" COVER & FRAME ALHAMBRA NO. A-1480 OR APPROVED EQUAL WEIGHT 610 LBS.
3. FRAME & COVER SHALL BE A GOOD FIT & NOT RATTLE.

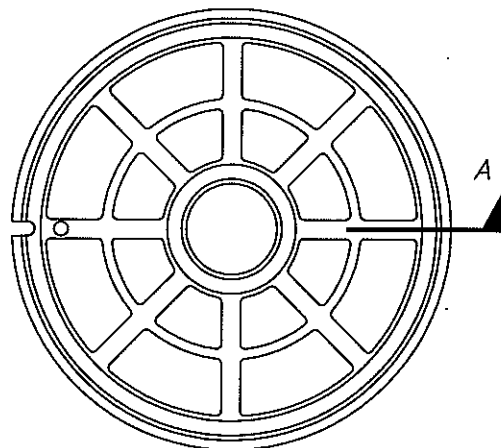
NOTE: APPROVED EQUALS TO THE ALHAMBRA A-1170:
 NORFOLK - NC-170
 SOUTHBAY - SBF1170 OR A22
 L.B. IRON - X-115A



PLAN OF FRAME



TOP VIEW



BOTTOM VIEW

PLAN OF COVER

APPROVED:

CITY ENGINEER

CITY OF HUNTINGTON BEACH

DEPARTMENT OF PUBLIC WORKS



REVISION DATE: MAY 2008

STANDARD SEWER
 MANHOLE COVER AND FRAME

STANDARD PLAN
 513
 1 of 1